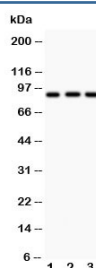


CUL1 Antibody (R30634)

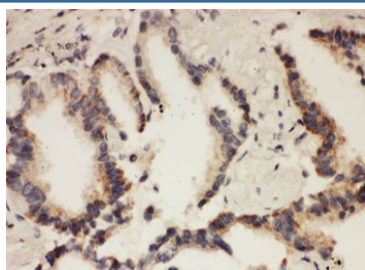
Catalog No.	Formulation	Size
R30634	0.5mg/ml if reconstituted with 0.2ml sterile DI water	100 ug

Bulk quote request

Availability	1-3 business days
Species Reactivity	Human, Mouse, Rat
Format	Antigen affinity purified
Host	Rabbit
Clonality	Polyclonal (rabbit origin)
Isotype	Rabbit IgG
Purity	Antigen affinity
Buffer	Lyophilized from 1X PBS with 2.5% BSA and 0.025% sodium azide/thimerosal
UniProt	Q13616
Localization	Nuclear, cytoplasmic
Applications	Western Blot : 0.5-1ug/ml IHC (FFPE) : 0.5-1ug/ml (1)
Limitations	This CUL1 antibody is available for research use only.



Western blot testing of CUL1 antibody and Lane 1: MM453; 2: HT1080; 3: SMMC-7721; Predicted/observed molecular weight ~90kDa.



IHC testing of FFPE human lung cancer tissue with CUL1 antibody. (1)

Description

Cullin 1 is a human protein and gene from cullin family. This protein plays an important role in protein degradation and protein ubiquitination. This is an essential component of the SCF(SKP1-CUL1-F-box protein) E3 ubiquitin ligase complex, which mediates the ubiquitination of proteins involved in cell cycle progression, signal transduction and transcription. Human CUL1, but not the other closely related cullins 2, 3, 4A, and 5, selectively interacts with human SKP1.

Application Notes

The stated application concentrations are suggested starting amounts. Titration of the CUL1 antibody may be required due to differences in protocols and secondary/substrate sensitivity.

1. Required HIER for FFPE samples: Boil the paraffin sections in pH 6, 10mM citrate buffer for 20 minutes and allow to cool prior to testing.

Immunogen

An amino acid sequence from the N-terminus of human Cullin 1 (RQSMAKSRYMELYTHVYNY) was used as the immunogen for this CUL1 antibody (100% homologous in human, mouse and rat).

Storage

After reconstitution, the CUL1 antibody can be stored for up to one month at 4oC. For long-term, aliquot and store at -20oC. Avoid repeated freezing and thawing.