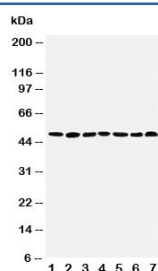


CTBP1 Antibody (R30646)

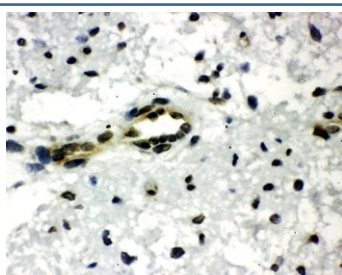
Catalog No.	Formulation	Size
R30646	0.5mg/ml if reconstituted with 0.2ml sterile DI water	100 ug

Bulk quote request

Availability	1-3 business days
Species Reactivity	Human, Mouse, Rat
Format	Antigen affinity purified
Host	Rabbit
Clonality	Polyclonal (rabbit origin)
Isotype	Rabbit IgG
Purity	Antigen affinity
Buffer	Lyophilized from 1X PBS with 2.5% BSA and 0.025% sodium azide/thimerosal
UniProt	Q13363
Applications	Western Blot : 0.5-1ug/ml IHC (FFPE) : 0.5-1ug/ml
Limitations	This CTBP1 antibody is available for research use only.



Western blot testing of CTBP1 antibody and Lane 1: rat brain; 2: rat testis; 3: rat ovary; 4: U87; 5: SW620; 6: HT1080; 7: COLO320 cell lysate. Predicted/observed molecular weight: ~47kDa.



IHC-P: CTBP1 antibody testing of rat brain tissue. HIER: steamed with pH6 citrate buffer.

Description

C-terminal-binding protein 1 is encoded by the CTBP1 gene. It binds to the C-terminus of adenovirus E1A proteins. It is a transcriptional repressor (corepressor) and may play a role during cellular proliferation. This protein and the product of a second closely related gene, CTBP2, can dimerize. CtBP1 and CtBP2 preferentially associate with the E1A via a 5 amino acid motif, PLDLS, to repress E1A induced oncogenesis and cellular transformation. CtBP1 is expressed from embryo to adult, but CtBP2 is mainly expressed during embryogenesis. During skeletal and T cell development, CtBP1 and -2 associate with the PLDLSL domain of delta EF1, a cellular zinc finger-homeodomain protein, and thereby enhances delta EF1-induced transcriptional silencing. In addition, CtBP complexes with CtIP, a 125 kDa protein that recognizes distinctly different protein motifs from CtBP. CtIP binds to the BRCT repeats within the breast cancer gene BRCA1 and enables CtBP to influence BRCA1 activity. Both proteins can also interact with a polycomb group protein complex which participates in regulation of gene expression during development. Alternative splicing of transcripts from this gene results in multiple transcript variants.

Application Notes

The stated application concentrations are suggested starting amounts. Titration of the CTBP1 antibody may be required due to differences in protocols and secondary/substrate sensitivity.

Immunogen

Amino acids 425-440 (QTVKPEADRDHASDQL-human) were used as the immunogen for this CTBP1 antibody.

Storage

After reconstitution, the CTBP1 antibody can be stored for up to one month at 4°C. For long-term, aliquot and store at -20°C. Avoid repeated freezing and thawing.