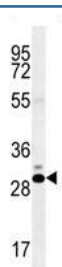


## CT45A Antibody (F40010)

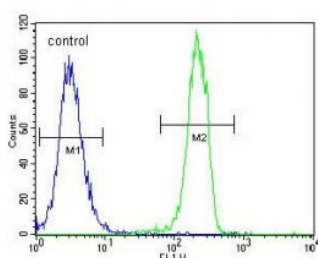
Catalog No.	Formulation	Size
F40010-0.4ML	In 1X PBS, pH 7.4, with 0.09% sodium azide	0.4 ml
F40010-0.08ML	In 1X PBS, pH 7.4, with 0.09% sodium azide	0.08 ml

[Bulk quote request](#)

<b>Availability</b>	1-3 business days
<b>Species Reactivity</b>	Human
<b>Format</b>	Antigen affinity purified
<b>Clonality</b>	Polyclonal (rabbit origin)
<b>Isotype</b>	Rabbit Ig
<b>Purity</b>	Antigen affinity
<b>UniProt</b>	Q5HYN5
<b>Applications</b>	Western Blot : 1:1000 Flow Cytometry : 1:10-1:50
<b>Limitations</b>	This CT45A antibody is available for research use only.



CT45A antibody western blot analysis in K562 lysate



CT45A1 antibody flow cytometric analysis of K562 cells (green) compared to a negative control cell (blue). FITC-conjugated goat-anti-rabbit secondary Ab was used for the analysis.

## Description

Cancer/testis antigen family 45 member A1

## Application Notes

Titration of the CT45A antibody may be required due to differences in protocols and secondary/substrate sensitivity.

## Immunogen

A portion of amino acids 1-30 from the human protein was used as the immunogen for this CT45A antibody.

## Storage

Aliquot the CT45A antibody and store frozen at -20oC or colder. Avoid repeated freeze-thaw cycles.