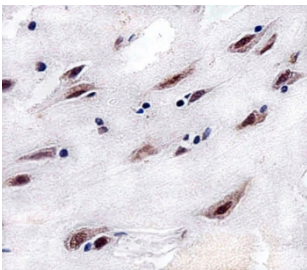


CSNK2A1 Antibody (F54742)

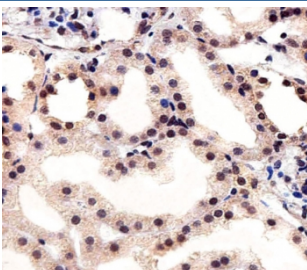
Catalog No.	Formulation	Size
F54742-0.4ML	In 1X PBS, pH 7.4, with 0.09% sodium azide	0.4 ml
F54742-0.08ML	In 1X PBS, pH 7.4, with 0.09% sodium azide	0.08 ml

[Bulk quote request](#)

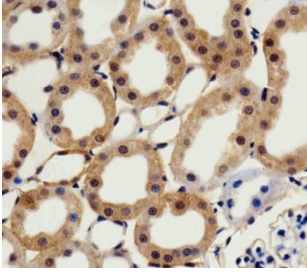
Availability	1-3 business days
Species Reactivity	Human
Format	Purified
Host	Rabbit
Clonality	Polyclonal (rabbit origin)
Isotype	Rabbit Ig
Purity	Antigen affinity purified
UniProt	P68400
Localization	Cytoplasmic, nuclear
Applications	Immunohistochemistry (FFPE) : 1:25 Western Blot : 1:500-1:1000
Limitations	This CSNK2A1 antibody is available for research use only.



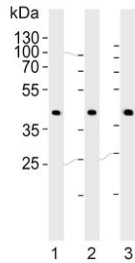
IHC testing of FFPE human brain tissue with CSNK2A1 antibody. HIER: steam section in pH6 citrate buffer for 20 min and allow to cool prior to staining.



IHC testing of FFPE human kidney tissue with CSNK2A1 antibody. HIER: steam section in pH6 citrate buffer for 20 min and allow to cool prior to staining.



IHC testing of FFPE rat kidney tissue with CSNK2A1 antibody. HIER: steam section in pH6 citrate buffer for 20 min and allow to cool prior to staining.



Western blot testing of human 1) A431, 2) HeLa and 3) HepG2 cell lysate with CSNK2A1 antibody. Predicted molecular weight ~45 kDa.

Description

Catalytic subunit of a constitutively active serine/threonine-protein kinase complex that phosphorylates a large number of substrates containing acidic residues C-terminal to the phosphorylated serine or threonine. [UniProt]

Application Notes

The stated application concentrations are suggested starting points. Titration of the CSNK2A1 antibody may be required due to differences in protocols and secondary/substrate sensitivity.

Immunogen

A portion of amino acids 250-284 from the human protein was used as the immunogen for the CSNK2A1 antibody.

Storage

Aliquot the CSNK2A1 antibody and store frozen at -20oC or colder. Avoid repeated freeze-thaw cycles.