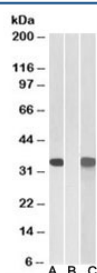


## CRISP2 Antibody (R35298)

Catalog No.	Formulation	Size
R35298-100UG	0.5 mg/ml in 1X TBS, pH7.3, with 0.5% BSA (US sourced) and 0.02% sodium azide	100 ug

[Bulk quote request](#)

Availability	1-3 business days
Species Reactivity	Human
Predicted Reactivity	Dog, Pig
Format	Antigen affinity purified
Clonality	Polyclonal (goat origin)
Isotype	Goat Ig
Purity	Antigen affinity
Gene ID	7180
Applications	Western Blot : 1-3ug/ml ELISA (peptide) LOD : 1:8000
Limitations	This CRISP2 antibody is available for research use only.



Western blot of HEK293 transfected with human CRISP2-MYC tested with CRISP2 antibody (0.1ug/ml) in Lane A and anti-MYC (1/1000) in lane C. Mock-transfected HEK293 probed with CRISP2 (1ug/ml) in Lane B. Predicted molecular weight: ~27/31kDa (isoforms 1/2).

## Description

Additional name(s) for this target protein: Cysteine-rich secretory protein 2

## Application Notes

Optimal dilution of the CRISP2 antibody should be determined by the researcher.

1. A 55kDa band was observed in human testis (27-31kDa is expected).

## Immunogen

Amino acids QHSDPEDRKTSTR were used as the immunogen for this CRISP2 antibody.

## Storage

Aliquot and store the CRISP2 antibody at -20oC.