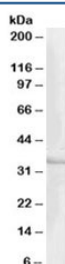


CREM Antibody (R34716)

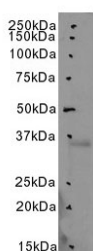
Catalog No.	Formulation	Size
R34716-100UG	0.5 mg/ml in 1X TBS, pH7.3, with 0.5% BSA (US sourced) and 0.02% sodium azide	100 ug

[Bulk quote request](#)

Availability	1-3 business days
Species Reactivity	Human
Predicted Reactivity	Mouse, Rat, Cow
Format	Antigen affinity purified
Clonality	Polyclonal (goat origin)
Isotype	Goat Ig
Purity	Antigen affinity
Gene ID	1390
Applications	Western Blot : 1-3ug/ml ELISA (peptide) LOD : 1:16000
Limitations	This CREM antibody is available for research use only.



Western blot testing of human heart lysate with CREM antibody at 1ug/ml. Predicted molecular weight: ~33 kDa.



Western blot testing of human heart lysate with CREM antibody at 3ug/ml. Predicted molecular weight: ~33 kDa.

Description

Additional name(s) for this target protein: CAMP response element modulator, ICER

Application Notes

Optimal dilution of the CREM antibody should be determined by the researcher.

1. This CREM antibody will detect isoforms *a/e/f/k/l/m/n/o/p/q*.

Immunogen

Amino acids LETLKDICSPKTDY were used as the immunogen for this CREM antibody.

Storage

Aliquot and store the CREM antibody at -20oC.