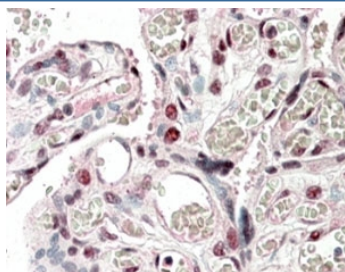


CREB3L2 Antibody (R33612)

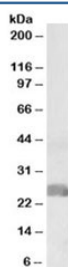
Catalog No.	Formulation	Size
R33612-100UG	0.5 mg/ml in 1X TBS, pH7.3, with 0.5% BSA (US sourced) and 0.02% sodium azide	100 ug

[Bulk quote request](#)

Availability	1-3 business days
Species Reactivity	Human
Format	Antigen affinity purified
Clonality	Polyclonal (goat origin)
Isotype	Goat Ig
Purity	Antigen affinity
UniProt	Q70SY1
Gene ID	64764
Applications	Western Blot : 1-3ug/ml Immunohistochemistry (FFPE) : 5-10ug/ml ELISA (peptide) LOD : 1:128000
Limitations	This CREB3L2 antibody is available for research use only.



IHC staining of FFPE human placenta with CREB3L2 antibody at 5ug/ml. HIER: steamed with pH6 citrate buffer, AP-staining.



Western blot testing of human placenta lysate with CREB3L2 antibody at 1ug/ml. Predicted molecular weight: ~57/51/28kDa (isoforms 1/2/3).

Description

Additional name(s) for this target protein: CAMP responsive element binding protein 3-like 2

Application Notes

Optimal dilution of the CREB3L2 antibody should be determined by the researcher.

Immunogen

Amino acids DRKLSELPDGE were used as the immunogen for this CREB3L2 antibody. This sequence is common to human isoforms 1, 2 and 3, and mouse/rat isoform 1.

Storage

Aliquot and store the CREB3L2 antibody at -20oC.