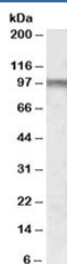


## CPT1C Antibody (R34654)

Catalog No.	Formulation	Size
R34654-100UG	0.5 mg/ml in 1X TBS, pH7.3, with 0.5% BSA (US sourced) and 0.02% sodium azide	100 ug

[Bulk quote request](#)

Availability	1-3 business days
Species Reactivity	Human
Predicted Reactivity	Cow, Dog, Mouse, Pig, Rat
Format	Antigen affinity purified
Clonality	Polyclonal (goat origin)
Isotype	Goat Ig
Purity	Antigen affinity
Gene ID	126129
Applications	Western Blot : 1-3ug/ml ELISA (peptide) LOD : 1:8000
Limitations	This CPT1C antibody is available for research use only.



Western blot testing of human frontal cortex lysate with CPT1C antibody at 1ug/ml.  
Predicted molecular weight: ~91/90/81kDa (isoforms 1/2/3).

## Description

Additional name(s) for this target protein: Carnitine palmitoyltransferase 1C

## Application Notes

Optimal dilution of the CPT1C antibody should be determined by the researcher.

## Immunogen

Amino acids KSSTKTDSHRLGQH were used as the immunogen for this CPT1C antibody.

## **Storage**

Aliquot and store the CPT1C antibody at -20oC.