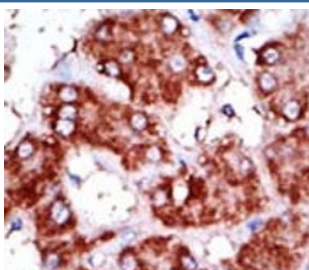


CPT1B Antibody (F48089)

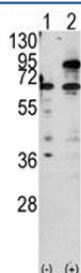
Catalog No.	Formulation	Size
F48089-0.4ML	In 1X PBS, pH 7.4, with 0.09% sodium azide	0.4 ml
F48089-0.08ML	In 1X PBS, pH 7.4, with 0.09% sodium azide	0.08 ml

[Bulk quote request](#)

Availability	1-3 business days
Species Reactivity	Human
Format	Purified
Host	Rabbit
Clonality	Polyclonal (rabbit origin)
Isotype	Rabbit Ig
Purity	Purified
UniProt	Q92523
Applications	Western Blot : 1:1000 IHC (Paraffin) : 1:50-1:100
Limitations	This CPT1B antibody is available for research use only.



IHC analysis of FFPE human hepatocarcinoma tissue stained with the CPT1B antibody



Western blot analysis of CPT1B antibody and 293 cell lysate either nontransfected (Lane 1) or transiently transfected with the CPT1B gene (2).

Description

CPT1B is a member of the carnitine/choline acetyltransferase family, and is the rate-controlling enzyme of the long-chain fatty acid beta-oxidation pathway in muscle mitochondria. This enzyme is required for the net transport of long-chain fatty acyl-CoAs from the cytoplasm into the mitochondria.

Application Notes

Titration of the CPT1B antibody may be required due to differences in protocols and secondary/substrate sensitivity.

Immunogen

A portion of amino acids 606-637 from the human protein was used as the immunogen for this CPT1B antibody.

Storage

Aliquot the CPT1B antibody and store frozen at -20oC or colder. Avoid repeated freeze-thaw cycles.