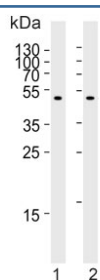


CPM Antibody / Carboxypeptidase M (F54598)

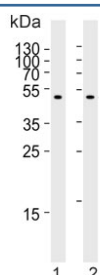
Catalog No.	Formulation	Size
F54598-0.4ML	In 1X PBS, pH 7.4, with 0.09% sodium azide	0.4 ml
F54598-0.08ML	In 1X PBS, pH 7.4, with 0.09% sodium azide	0.08 ml

Bulk quote request

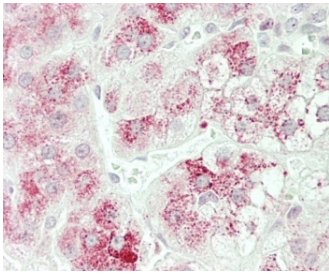
Availability	1-3 business days
Species Reactivity	Human
Format	Purified
Clonality	Polyclonal (rabbit origin)
Isotype	Rabbit Ig
Purity	Antigen affinity purified
UniProt	P14384
Applications	Western Blot : 1:500-1:2000 Immunohistochemistry (FFPE) : 1:25
Limitations	This CPM antibody is available for research use only.



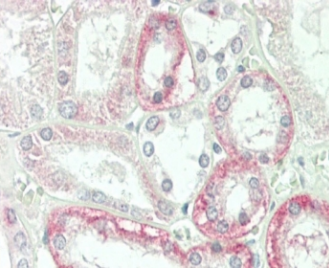
Western blot testing of human kidney tissue lysate with CPM antibody. Expected molecular weight: 51-65 kDa depending on glycosylation level.



Western blot testing of human 1) U-251 MG and 2) HEK293 cell lysate with CPM antibody. Expected molecular weight: 51-65 kDa depending on glycosylation level.



IHC testing of FFPE human adrenal tissue with CPM antibody. HIER: steam section in pH6 citrate buffer for 20 min and allow to cool prior to staining.



IHC testing of FFPE human kidney tissue with CPM antibody. HIER: steam section in pH6 citrate buffer for 20 min and allow to cool prior to staining.

Description

The protein encoded by this gene is a membrane-bound arginine/lysine carboxypeptidase. Its expression is associated with monocyte to macrophage differentiation. This encoded protein contains hydrophobic regions at the amino and carboxy termini and has 6 potential asparagine-linked glycosylation sites. The active site residues of carboxypeptidases A and B are conserved in this protein. Three alternatively spliced transcript variants encoding the same protein have been described for this gene. [provided by RefSeq].

Application Notes

The stated application concentrations are suggested starting points. Titration of the CPM antibody may be required due to differences in protocols and secondary/substrate sensitivity.

Immunogen

A portion of amino acids 212-241 from the human protein was used as the immunogen for the CPM antibody.

Storage

Aliquot the CPM antibody and store frozen at -20oC or colder. Avoid repeated freeze-thaw cycles.