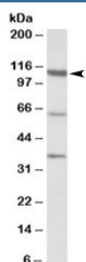


CP110 Antibody (R33222)

Catalog No.	Formulation	Size
R33222-100UG	0.5 mg/ml in 1X TBS, pH7.3, with 0.5% BSA (US sourced) and 0.02% sodium azide	100 ug

[Bulk quote request](#)

Availability	1-3 business days
Species Reactivity	Human
Format	Antigen affinity purified
Clonality	Polyclonal (goat origin)
Isotype	Goat Ig
Purity	Antigen affinity
Gene ID	9738
Localization	Cytoplasmic
Applications	Western Blot : 0.3-1ug/ml ELISA (peptide) LOD : 1:32000
Limitations	This CP110 antibody is available for research use only.



Western blot testing of human testis lysate with CP110 antibody at 1ug/ml. The expected ~110 kDa band and the additional ~65/37 kDa bands are all blocked by the immunizing peptide.

Description

Additional name(s) for this target protein: Centrosomal protein CP110; Centriolar coiled-coil protein of 110 kDa

Application Notes

Optimal dilution of the CP110 antibody should be determined by the researcher.

Immunogen

Amino acids CEKSLARIQEAS were used as the immunogen for this CP110 antibody.

Storage

Aliquot and store the CP110 antibody at -20oC.