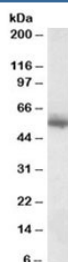


Copine 1 Antibody (R33155)

Catalog No.	Formulation	Size
R33155-100UG	0.5 mg/ml in 1X TBS, pH7.3, with 0.5% BSA (US sourced) and 0.02% sodium azide	100 ug

[Bulk quote request](#)

Availability	1-3 business days
Species Reactivity	Human
Predicted Reactivity	Cow, Dog
Format	Antigen affinity purified
Clonality	Polyclonal (goat origin)
Isotype	Goat Ig
Purity	Antigen affinity
Gene ID	8904
Applications	Western Blot : 0.1-0.3ug/ml ELISA (peptide) LOD : 1:16000
Limitations	This Copine 1 antibody is available for research use only.



Western blot testing of human skin lysate with Copine 1 antibody at 0.1ug/ml. Predicted molecular weight: ~59kDa.

Description

Additional name(s) for this target protein: CPNE1

Application Notes

Optimal dilution of the Copine 1 antibody should be determined by the researcher.

Immunogen

Amino acids APLKPLPPSAKDPA were used as the immunogen for this Copine 1 antibody.

Storage

Aliquot and store the Copine 1 antibody at -20oC.