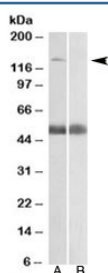


## COPA Antibody (R33355)

Catalog No.	Formulation	Size
R33355-100UG	0.5 mg/ml in 1X TBS, pH7.3, with 0.5% BSA (US sourced) and 0.02% sodium azide	100 ug

[Bulk quote request](#)

Availability	1-3 business days
Species Reactivity	Human
Predicted Reactivity	Cow, Mouse, Pig, Rat
Format	Antigen affinity purified
Clonality	Polyclonal (goat origin)
Isotype	Goat Ig
Purity	Antigen affinity
Gene ID	1314
Applications	Western Blot : 0.5-2ug/ml ELISA (peptide) LOD : 1:1000
Limitations	This COPA antibody is available for research use only.



Western blot testing of human prostate lysate with COPA antibody at 0.5ug/ml with [B] and without [A] blocking/immunizing peptide. Predicted molecular weight: ~138kDa.

## Description

Additional name(s) for this target protein: Coatomer protein complex, subunit alpha

## Application Notes

Optimal dilution of the COPA antibody should be determined by the researcher.

## Immunogen

Amino acids CTRASNLENST were used as the immunogen for this COPA antibody.

## **Storage**

Aliquot and store the COPA antibody at -20oC.