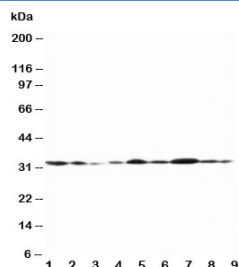


Connexin 32 Antibody (R30436)

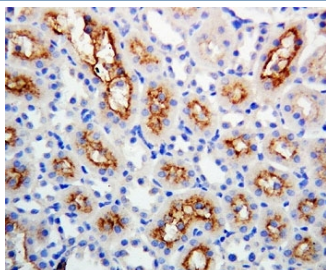
Catalog No.	Formulation	Size
R30436	0.5mg/ml if reconstituted with 0.2ml sterile DI water	100 ug

[Bulk quote request](#)

Availability	1-3 business days
Species Reactivity	Human, Mouse, Rat
Format	Antigen affinity purified
Host	Rabbit
Clonality	Polyclonal (rabbit origin)
Isotype	Rabbit IgG
Purity	Antigen affinity
Buffer	Lyophilized from 1X PBS with 2.5% BSA and 0.025% sodium azide/thimerosal
UniProt	P08034
Localization	Cell surface, cytoplasmic
Applications	Western Blot : 0.5-1ug/ml IHC (FFPE) : 0.5-1ug/ml
Limitations	This Connexin 32 antibody is available for research use only.



Western blot testing of Connexin 32 antibody and Lane 1: rat heart; 2: (r) heart; 3: (r) skeletal muscle; 4: (r) brain; 5: human MCF-7; 6: (h) HeLa; 7: (h) SMMC-7721; 8: (h) Jurkat; 9: (h) COLO320 lysate. Predicted molecular weight ~32 kDa.



IHC-P: Connexin 32 antibody testing of rat kidney tissue

Description

Connexins are membrane-spanning proteins that assemble to form gap junction channels that facilitate the transfer of ions and small molecules between cells (Bergoffen et al., 1993). For a general discussion of connexin proteins, also known as Gap junction beta-1 protein. Gap junction beta-1 protein is a protein that in humans is encoded by the GJB1 gene. In melanocytic cells GJB1 gene expression may be regulated by MITF.

Application Notes

The stated application concentrations are suggested starting amounts. Titration of the Connexin 32 antibody may be required due to differences in protocols and secondary/substrate sensitivity.

Immunogen

An amino acid sequence from the middle region of human Connexin 32/GJB1 (RACARRAQRRSNPPSRK) was used as the immunogen for this Connexin 32 antibody (100% homologous in human, mouse and rat).

Storage

After reconstitution, the Connexin 32 antibody can be stored for up to one month at 4°C. For long-term, aliquot and store at -20°C. Avoid repeated freezing and thawing.