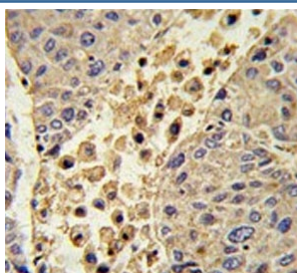


Collectin 11 Antibody / COLEC11 (F54889)

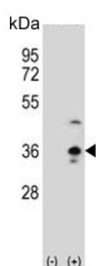
Catalog No.	Formulation	Size
F54889-0.4ML	In 1X PBS, pH 7.4, with 0.09% sodium azide	0.4 ml
F54889-0.08ML	In 1X PBS, pH 7.4, with 0.09% sodium azide	0.08 ml

Bulk quote request

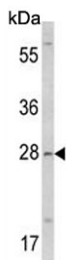
Availability	1-3 business days
Species Reactivity	Human
Format	Purified
Clonality	Polyclonal (rabbit origin)
Isotype	Rabbit Ig
Purity	Purified
UniProt	Q9BWP8
Applications	Western Blot : 1:500-1:1000 Flow Cytometry : 1:10-1:50 (1x10 ⁶ cells) Immunohistochemistry (FFPE) : 1:50-1:100
Limitations	This Collectin 11 antibody is available for research use only.



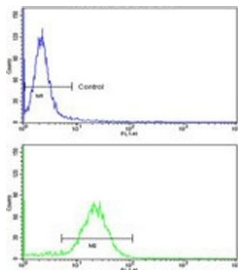
IHC testing of FFPE human tonsil tissue with Collectin 11 antibody. HIER: steam section in pH6 citrate buffer for 20 min and allow to cool prior to staining.



Western blot testing of 1) non-transfected and 2) transfected 293 cell lysate with Collectin 11 antibody.



Western blot testing of human MDA-MB-231 cell lysate with Collectin 11 antibody.
Predicted molecular weight ~29 kDa.



Flow cytometry testing of human MDA-MB-231 cells with Collectin 11 antibody;
Blue=isotype control, Green= Collectin 11 antibody.

Description

COLEC11 is a member of the collectin family of C-type lectins, which contain a collagen-like domain and a carbohydrate recognition domain, and play a role in host-defense

Application Notes

The stated application concentrations are suggested starting points. Titration of the Collectin 11 antibody may be required due to differences in protocols and secondary/substrate sensitivity.

Immunogen

A portion of amino acids 50-78 from the human protein was used as the immunogen for the Collectin 11 antibody.

Storage

Aliquot the Collectin 11 antibody and store frozen at -20oC or colder. Avoid repeated freeze-thaw cycles.