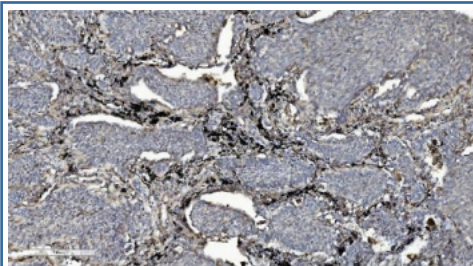


## CMBL Antibody (RQ6089)

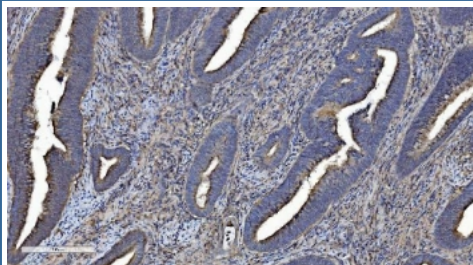
Catalog No.	Formulation	Size
RQ6089	0.5mg/ml if reconstituted with 0.2ml sterile DI water	100 ug

**Bulk quote request**

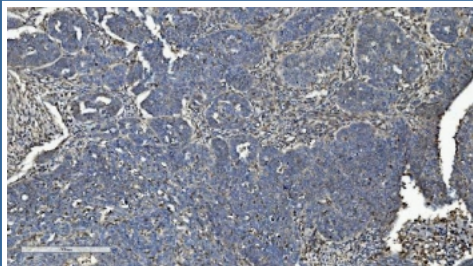
<b>Availability</b>	1-3 business days
<b>Species Reactivity</b>	Human, Mouse, Rat
<b>Format</b>	Antigen affinity purified
<b>Host</b>	Rabbit
<b>Clonality</b>	Polyclonal (rabbit origin)
<b>Isotype</b>	Rabbit IgG
<b>Purity</b>	Affinity purified
<b>Buffer</b>	Lyophilized from 1X PBS with 2% Trehalose and 0.025% sodium azide
<b>UniProt</b>	Q96DG6
<b>Localization</b>	Cytoplasmic
<b>Applications</b>	Western Blot : 1-2ug/ml Immunohistochemistry (FFPE) : 2-5ug/ml Direct ELISA : 0.1-0.5ug/ml
<b>Limitations</b>	This CMBL antibody is available for research use only.



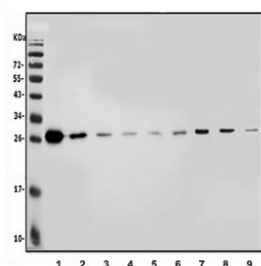
IHC staining of FFPE human lung cancer with CMBL antibody. HIER: boil tissue sections in pH8 EDTA for 20 min and allow to cool before testing.



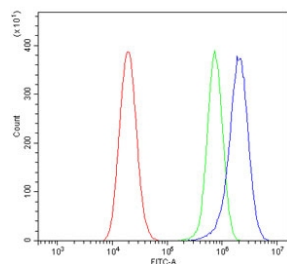
IHC staining of FFPE human colorectal cancer with CMBL antibody. HIER: boil tissue sections in pH8 EDTA for 20 min and allow to cool before testing.



IHC staining of FFPE human adnexal serous adenocarcinoma tissue with CMBL antibody. HIER: boil tissue sections in pH8 EDTA for 20 min and allow to cool before testing.



Western blot testing of human 1) K562, 2) PC-3, 3) HepG2, 4) HEK293, 5) A549, 6) U-87 MG, 7) rat liver, 8) rat kidney and 9) mouse kidney lysate with CMBL antibody. Predicted molecular weight ~28 kDa.



Flow cytometry testing of human U-2 OS cells with CMBL antibody at 1ug/million cells (blocked with goat sera); Red=cells alone, Green=isotype control, Blue= CMBL antibody.

## Description

CMBL is a cysteine hydrolase of the diene lactone hydrolase family that is highly expressed in liver cytosol. CMBL preferentially cleaves cyclic esters, and it activates medoxomil-ester prodrugs in which the medoxomil moiety is linked to an oxygen atom.

## Application Notes

Optimal dilution of the CMBL antibody should be determined by the researcher.

## Immunogen

A human recombinant partial protein (amino acids M1-M246) was used as the immunogen for the CMBL antibody.

## Storage

After reconstitution, the CMBL antibody can be stored for up to one month at 4°C. For long-term, aliquot and store at -20°C. Avoid repeated freezing and thawing.

