

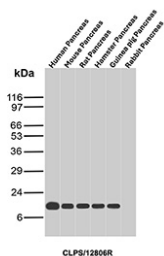
CLPS Antibody / Pancreatic Digestive Enzyme Marker [clone CLPS/12806R] (V5861)

Catalog No.	Formulation	Size
V5861-100UG	0.2 mg/ml in 1X PBS with 0.05% BSA, 0.05% sodium azide	100 ug
V5861-20UG	0.2 mg/ml in 1X PBS with 0.05% BSA, 0.05% sodium azide	20 ug
V5861SAF-100UG	1 mg/ml in 1X PBS; BSA free, sodium azide free	100 ug

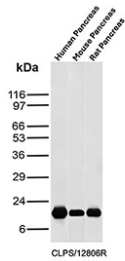
Recombinant **RABBIT MONOCLONAL**

[Bulk quote request](#)

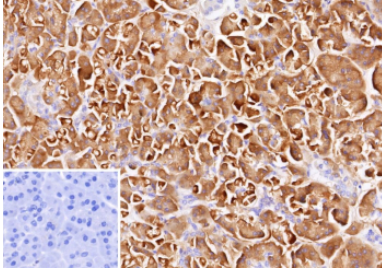
Species Reactivity	Guinea Pig, Hamster, Human, Mouse, Rat
Format	Purified
Host	Rabbit
Clonality	Recombinant Rabbit Monoclonal
Isotype	Rabbit IgG, kappa
Clone Name	CLPS/12806R
UniProt	P04118
Localization	Secreted
Applications	Immunohistochemistry (FFPE) : 1-2ug/ml Western Blot : 2-4ug/ml
Limitations	This CLPS Antibody / Pancreatic Digestive Enzyme Marker is available for research use only.



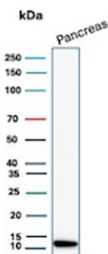
CLPS Antibody Multi-Species Pancreas WB. Western blot analysis of human pancreas lysate, mouse pancreas lysate, rat pancreas lysate, hamster pancreas lysate, guinea pig pancreas lysate, and rabbit pancreas lysate using CLPS antibody. The recombinant rabbit monoclonal antibody clone CLPS/12806R detects a single band at approximately 12 kDa, consistent with the predicted molecular weight of Colipase / CLPS. Signal is observed across multiple pancreatic samples with comparable intensity, while rabbit pancreas shows minimal detection, and low background supports specificity for this pancreatic digestive enzyme marker.



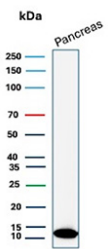
CLPS Antibody Comparative Pancreas WB. Western blot analysis of human pancreas lysate, mouse pancreas lysate, and rat pancreas lysate using CLPS antibody. The recombinant rabbit monoclonal antibody clone CLPS/12806R detects a distinct band at approximately 12 kDa, consistent with the predicted molecular weight of Colipase / CLPS. Comparable signal intensity across species supports conserved expression in pancreatic tissue, while minimal background staining reinforces specificity for this pancreatic digestive enzyme marker.



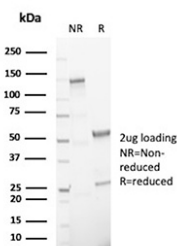
CLPS Antibody Human Pancreas Tissue IHC. Immunohistochemistry analysis of FFPE human pancreas tissue using CLPS antibody. The recombinant rabbit monoclonal antibody clone CLPS/12806R shows strong HRP-DAB brown cytoplasmic staining in pancreatic acinar cells, with a granular distribution consistent with Colipase / CLPS expression as a pancreatic digestive enzyme marker. Surrounding stromal elements display minimal background, and a PBS-only control confirms low non-specific staining. HIER: boil tissue sections in 10 mM Tris with 1 mM EDTA, pH 9.0, for 45 min at 95oC followed by cooling at RT for 20 min.



CLPS Antibody Human Pancreas WB. Western blot analysis of human pancreas lysate using CLPS antibody. The recombinant rabbit monoclonal antibody clone CLPS/12806R detects a band at approximately 12 kDa, consistent with the predicted molecular weight of Colipase / CLPS. Strong signal in pancreatic tissue aligns with its role as a digestive enzyme cofactor produced by acinar cells, while low background supports specific detection of this pancreatic enzyme marker.



Western blot analysis of human pancreas tissue lysate using CLPS/Colipase antibody (clone CLPS/12806R). Predicted molecular weight ~12 kDa.



SDS-PAGE analysis of purified, BSA-free CLPS/Colipase antibody (clone CLPS/12806R) as confirmation of integrity and purity.

Description

Colipase (CLPS) is a pancreatic secreted protein that functions as an essential cofactor for pancreatic lipase, enabling efficient digestion of dietary lipids in the small intestine. CLPS Antibody is widely used to study this protein in pancreatic tissue and digestive systems, where it is produced by acinar cells and secreted into the gastrointestinal tract to support lipid hydrolysis and nutrient absorption.

The CLPS Antibody / Pancreatic Digestive Enzyme Marker is designed to detect Colipase in pathways associated with exocrine pancreatic function and digestive enzyme activity. CLPS antibody, also referred to as Colipase antibody or pancreatic colipase antibody in the literature, enables identification of this protein in tissue and lysate-based assays

where characterization of digestive enzyme systems is required. Its restricted expression in pancreatic acinar cells makes it a highly specific marker of exocrine pancreas biology.

Functionally, Colipase binds pancreatic lipase and facilitates its interaction with lipid substrates in the presence of bile salts, stabilizing the enzyme at the lipid-water interface. This interaction is critical for efficient triglyceride breakdown and absorption of fatty acids. CLPS Antibody is therefore valuable for studying digestive physiology, enzyme regulation, and pancreatic exocrine function in both normal and disease contexts.

CLPS is primarily expressed in pancreatic acinar cells, where it is synthesized, processed, and secreted into the digestive tract. In immunohistochemistry, this is reflected by strong cytoplasmic staining in acinar structures, consistent with protein production and secretion. Minimal expression is typically observed in non-pancreatic tissues, reinforcing its specificity as a pancreatic marker.

Subcellularly, Colipase is synthesized in the endoplasmic reticulum and processed through the secretory pathway prior to release. In western blot analysis, CLPS is detected as a relatively low molecular weight protein consistent with its mature secreted form. Detection across pancreatic and related tissue lysates provides insight into protein expression levels and secretion dynamics.

This CLPS Antibody is supported by western blot data demonstrating detection of Colipase in relevant tissue lysates, along with immunohistochemistry data showing strong staining in pancreatic tissue consistent with known expression patterns. Together, these features support its use in studies of digestive enzyme biology, pancreatic function, and lipid metabolism.

This antibody is part of a [broader antibody panel](#) offered by NSJ Bioreagents.

Application Notes

Optimal dilution of the CLPS Antibody / Pancreatic Digestive Enzyme Marker should be determined by the researcher.

Immunogen

A recombinant fragment (around amino acids 1-112) of human CLPS protein (exact sequence is proprietary) was used as the immunogen for the CLPS/Colipase antibody.

Storage

CLPS/Colipase antibody with sodium azide - store at 2 to 8oC; antibody without sodium azide - store at -20 to -80oC.

Alternate Names

Colipase antibody, CLPS protein antibody, Pancreatic colipase antibody, Colipase digestive enzyme antibody, CLPS enzyme antibody