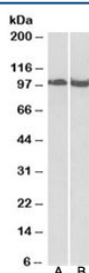


## CLOCK Antibody (R33663)

Catalog No.	Formulation	Size
R33663-100UG	0.5 mg/ml in 1X TBS, pH7.3, with 0.5% BSA (US sourced) and 0.02% sodium azide	100 ug

[Bulk quote request](#)

Availability	1-3 business days
Species Reactivity	Human, Mouse, Rat
Format	Antigen affinity purified
Clonality	Polyclonal (goat origin)
Isotype	Goat Ig
Purity	Antigen affinity
Gene ID	9575
Localization	Nuclear, cytoplasmic
Applications	Western Blot : 0.03-0.1ug/ml ELISA (peptide) LOD : 1:128000
Limitations	This CLOCK antibody is available for research use only.



Western blot testing of mouse [A] and rat [B] skeletal muscle lysate with CLOCK antibody at 0.03ug/ml. Predicted molecular weight ~95 kDa but routinely observed at 95-110 kDa.

## Description

Additional name(s) for this target protein: Circadian locomoter output cycles protein kaput; KAT13D

## Application Notes

Optimal dilution of the CLOCK antibody should be determined by the researcher.

## Immunogen

Amino acids DTSTPPRQHLP AHEK were used as the immunogen for this CLOCK antibody.

## Storage

Aliquot and store the CLOCK antibody at -20oC.

## References (2)