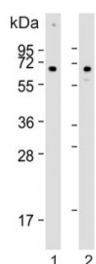


CLEC4F Antibody (F54590)

Catalog No.	Formulation	Size
F54590-0.4ML	In 1X PBS, pH 7.4, with 0.09% sodium azide	0.4 ml
F54590-0.08ML	In 1X PBS, pH 7.4, with 0.09% sodium azide	0.08 ml

[Bulk quote request](#)

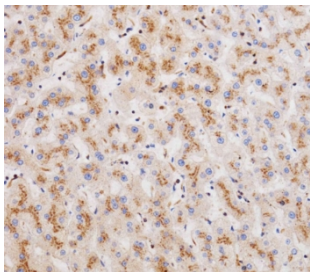
Availability	1-3 business days
Species Reactivity	Human
Format	Purified
Host	Rabbit
Clonality	Polyclonal (rabbit origin)
Isotype	Rabbit Ig
Purity	Antigen affinity purified
UniProt	Q8N1N0
Applications	Immunohistochemistry (FFPE) : 1:25 Western Blot : 1:500-1:2000
Limitations	This CLEC4F antibody is available for research use only.



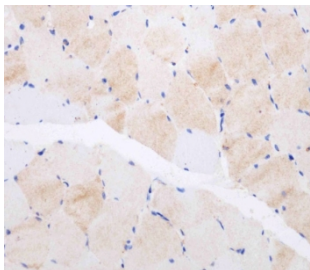
Western blot testing of human 1) HeLa and 2) U-2 OS cell lysate with CLEC4F antibody. Predicted molecular weight ~66 kDa.



Western blot testing of human CCRF-CEM cell lysate with CLEC4F antibody. Predicted molecular weight ~66 kDa.



IHC testing of FFPE human liver tissue with CLEC4F antibody. HIER: steam section in pH6 citrate buffer for 20 min and allow to cool prior to staining.



IHC testing of FFPE human skeletal muscle tissue with CLEC4F antibody. HIER: steam section in pH6 citrate buffer for 20 min and allow to cool prior to staining.

Description

Receptor with an affinity for galactose and fucose. Could be involved in endocytosis (UniProt).

Application Notes

The stated application concentrations are suggested starting points. Titration of the CLEC4F antibody may be required due to differences in protocols and secondary/substrate sensitivity.

Immunogen

A portion of amino acids 311-339 from the human protein was used as the immunogen for the CLEC4F antibody.

Storage

Aliquot the CLEC4F antibody and store frozen at -20oC or colder. Avoid repeated freeze-thaw cycles.