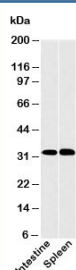


CLEC1 Antibody (N1092)

Catalog No.	Formulation	Size
N1092-100UG	0.5 mg/ml in 1X PBS with 0.1 mg/ml BSA (US sourced), 0.05% sodium azide	100 ug
N1092-25UG	0.5 mg/ml in 1X PBS with 0.1 mg/ml BSA (US sourced), 0.05% sodium azide	25 ug

[Bulk quote request](#)

Species Reactivity	Human
Format	Purified
Host	Rabbit
Clonality	Polyclonal (rabbit origin)
Isotype	Rabbit IgG
Purity	Protein A purified antibody
Buffer	1X PBS, pH 7.4
Gene ID	51267
Applications	Western Blot : 2-5ug/ml
Limitations	This CLEC1 antibody is available for research use only.



Western blot testing of human samples with CLEC1 antibody at 2ug/ml.

Description

CLEC1 is a C-type lectin receptor and part of the 'Dectin-1 cluster' subfamily which also includes Dectin-1, LOX-1, CLEC-2, MICL, CLEC12B, and CLEC9A. Similar to other family members, CLEC1 displays N-linked glycosylation and dimerization characteristics, and is found on dendritic cells, monocytes and granulocytes. However, unlike other family members, CLEC1 expression level is upregulated by IL-10 and TGF β , but not by pro-inflammatory stimuli, and it is expressed on endothelial cells. Enhanced expression at allograft sites suggests CLEC1 may have an immune-regulatory function and may support allograft tolerance.

Application Notes

Provided assay concentrations are suggestions only, CLEC1 antibody titration may be required for optimal results.

Immunogen

A recombinant protein fragment from the N-terminal portion of human CLEC1 was used as the immunogen for this antibody.

Storage

Aliquot the CLEC1 antibody and store frozen at -20°C or colder. Avoid repeated freeze-thaw cycles.

Alternate Names

C-type lectin-like receptor 1 antibody

References (2)