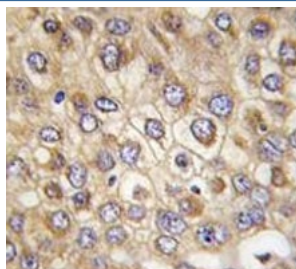


Claudin 2 Antibody (CLDN2) (F49580)

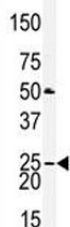
Catalog No.	Formulation	Size
F49580-0.4ML	In 1X PBS, pH 7.4, with 0.09% sodium azide	0.4 ml
F49580-0.08ML	In 1X PBS, pH 7.4, with 0.09% sodium azide	0.08 ml

[Bulk quote request](#)

Availability	1-3 business days
Species Reactivity	Human
Predicted Reactivity	Bovine, Mouse
Format	Antigen affinity purified
Host	Rabbit
Clonality	Polyclonal (rabbit origin)
Isotype	Rabbit Ig
Purity	Antigen affinity
UniProt	P57739
Applications	Western Blot : 1:1000 IHC (Paraffin) : 1:10-1:50
Limitations	This Claudin 2 antibody is available for research use only.



IHC analysis of FFPE human hepatocarcinoma tissue stained with Claudin 2 antibody



Western blot analysis of CLDN2 / Claudin 2 antibody and mouse heart tissue lysate

Description

Claudin-2 is expressed in cation-leaky epithelia such as that of the kidney proximal tubule. Mice that are deficient in the protein have reduced reabsorption of Na⁺ in the proximal tubule, consistent with a role in paracellular transport. Similar results have been obtained with cultured cells, as overexpression in CLDN2 lacking cells leads to increase of permeability for small cations. Furthermore, CLDN2 has been shown to form paracellular channels for water. [Wiki]

Application Notes

Titration of the Claudin 2 antibody may be required due to differences in protocols and secondary/substrate sensitivity.

Immunogen

A portion of amino acids 135-164 from the human protein was used as the immunogen for this Claudin 2 antibody.

Storage

Aliquot the Claudin 2 antibody and store frozen at -20oC or colder. Avoid repeated freeze-thaw cycles.