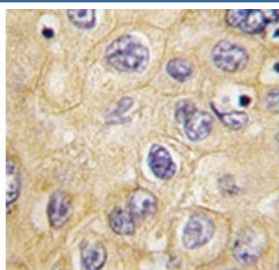


Claudin 1 Antibody (F49578)

Catalog No.	Formulation	Size
F49578-0.4ML	In 1X PBS, pH 7.4, with 0.09% sodium azide	0.4 ml
F49578-0.08ML	In 1X PBS, pH 7.4, with 0.09% sodium azide	0.08 ml

[Bulk quote request](#)

Availability	1-3 business days
Species Reactivity	Human
Format	Purified
Host	Rabbit
Clonality	Polyclonal (rabbit origin)
Isotype	Rabbit Ig
Purity	Purified
UniProt	O95832
Applications	Western Blot : 1:1000 IHC (Paraffin) : 1:10-1:50
Limitations	This Claudin 1 antibody is available for research use only.



IHC analysis of FFPE human hepatocarcinoma tissue stained with Claudin 1 antibody.



Claudin 1 antibody western blot analysis in A549 lysate

Description

Tight junctions represent one mode of cell-to-cell adhesion in epithelial or endothelial cell sheets, forming continuous seals around cells and serving as a physical barrier to prevent solutes and water from passing freely through the paracellular space. These junctions are comprised of sets of continuous networking strands in the outwardly facing cytoplasmic leaflet, with complementary grooves in the inwardly facing extracytoplasmic leaflet. CLDN1, a member of the claudin family, is an integral membrane protein and a component of tight junction strands. Loss of function mutations result in neonatal ichthyosis-sclerosing cholangitis syndrome.

Application Notes

Titration of the Claudin 1 antibody may be required due to differences in protocols and secondary/substrate sensitivity.

Immunogen

A portion of amino acids 40-82 from the human protein (loop 1) was used as the immunogen for this Claudin 1 antibody.

Storage

Aliquot the Claudin 1 antibody and store frozen at -20oC or colder. Avoid repeated freeze-thaw cycles.