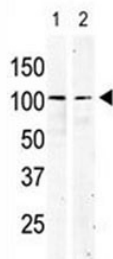


## cKit Antibody (F40156)

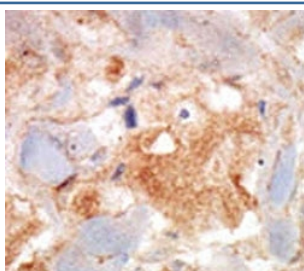
Catalog No.	Formulation	Size
F40156-0.4ML	In 1X PBS, pH 7.4, with 0.09% sodium azide	0.4 ml
F40156-0.08ML	In 1X PBS, pH 7.4, with 0.09% sodium azide	0.08 ml

[Bulk quote request](#)

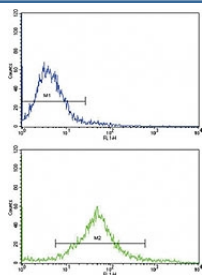
<b>Availability</b>	1-3 business days
<b>Species Reactivity</b>	Human, Primate
<b>Format</b>	Purified
<b>Host</b>	Rabbit
<b>Clonality</b>	Polyclonal (rabbit origin)
<b>Isotype</b>	Rabbit Ig
<b>Purity</b>	Purified
<b>UniProt</b>	P10721
<b>Applications</b>	Western Blot : 1:1000 IHC (Paraffin) : 1:10-1:50 Flow Cytometry : 1:10-1:50
<b>Limitations</b>	This cKit antibody is available for research use only.



cKit antibody used in western blot to detect KIT in serum-starved HeLa cell lysate (lane 1) and primate testis tissue lysate (2). Observed molecular weight: ~120/145kDa (precursor/mature).



cKit antibody was used in immunohistochemistry on breast carcinoma.



Flow cytometric analysis of HeLa cells using cKit antibody (green) compared to a negative control cell (blue). FITC-conjugated goat-anti-rabbit secondary Ab was used for the analysis.

## Description

c-Kit is a Tyrosine-protein kinase that acts as cell-surface receptor for the cytokine KITLG/SCF and plays an essential role in the regulation of cell survival and proliferation, hematopoiesis, stem cell maintenance, gametogenesis, mast cell development, migration and function, and in melanogenesis. [UniProt]

## Application Notes

Titration of the cKit antibody may be required due to differences in protocols and secondary/substrate sensitivity.

## Immunogen

A portion of amino acids 9-40 from the human protein was used as the immunogen for this cKit antibody.

## Storage

Aliquot the cKit antibody and store frozen at -20oC or colder. Avoid repeated freeze-thaw cycles.