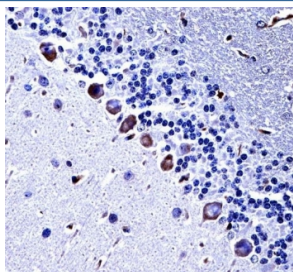


CKI-gamma 3 Antibody / Csnk1g3 (F54677)

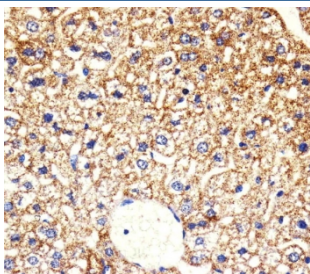
Catalog No.	Formulation	Size
F54677-0.4ML	In 1X PBS, pH 7.4, with 0.09% sodium azide	0.4 ml
F54677-0.08ML	In 1X PBS, pH 7.4, with 0.09% sodium azide	0.08 ml

[Bulk quote request](#)

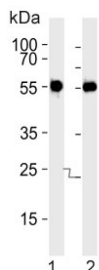
Availability	1-3 business days
Species Reactivity	Mouse
Format	Purified
Host	Rabbit
Clonality	Polyclonal (rabbit origin)
Isotype	Rabbit Ig
Purity	Antigen affinity purified
UniProt	Q8C4X2
Localization	Cytoplasmic
Applications	Flow Cytometry : 1:25 (1x10e6 cells) Immunohistochemistry (FFPE) : 1:25 Western Blot : 1:500-1:2000
Limitations	This CKI-gamma 3 antibody is available for research use only.



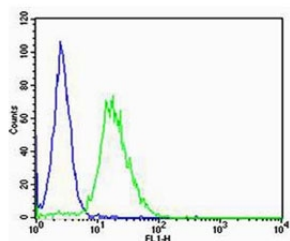
IHC testing of FFPE mouse cerebellum tissue with CKI-gamma 3 antibody. HIER: steam section in pH6 citrate buffer for 20 min and allow to cool prior to staining.



IHC testing of FFPE mouse liver tissue with CKI-gamma 3 antibody. HIER: steam section in pH6 citrate buffer for 20 min and allow to cool prior to staining.



Western blot testing of mouse 1) kidney and 2) liver lysate with CKI-gamma 3 antibody. Predicted molecular weight ~49 kDa.



Flow cytometry testing of mouse NIH 3T3 cells with CKI-gamma 3 antibody; Blue=isotype control, Green= CKI-gamma 3 antibody.

Description

Casein kinases are operationally defined by their preferential utilization of acidic proteins such as caseins as substrates. It can phosphorylate a large number of proteins. Participates in Wnt signaling (By similarity).

Application Notes

The stated application concentrations are suggested starting points. Titration of the CKI-gamma 3 antibody may be required due to differences in protocols and secondary/substrate sensitivity.

Immunogen

A portion of amino acids 333-361 from the mouse protein was used as the immunogen for the CKI-gamma 3 antibody.

Storage

Aliquot the CKI-gamma 3 antibody and store frozen at -20°C or colder. Avoid repeated freeze-thaw cycles.