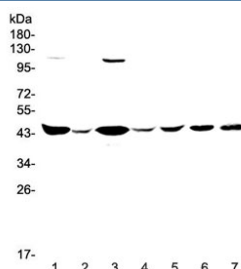


CKB Antibody / Creatine kinase B (RQ4327)

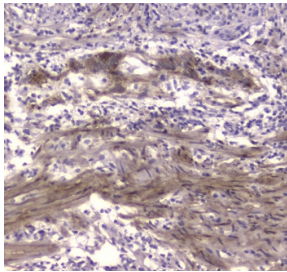
Catalog No.	Formulation	Size
RQ4327	0.5mg/ml if reconstituted with 0.2ml sterile DI water	100 ug

Bulk quote request

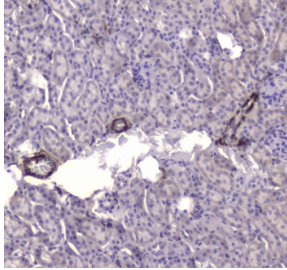
Availability	1-3 business days
Species Reactivity	Human, Mouse, Rat
Format	Antigen affinity purified
Host	Rabbit
Clonality	Polyclonal (rabbit origin)
Isotype	Rabbit IgG
Purity	Antigen affinity purified
Buffer	Lyophilized from 1X PBS with 2% Trehalose and 0.025% sodium azide
UniProt	P12277
Localization	Cytoplasm
Applications	Western Blot : 0.5-1ug/ml IHC (FFPE) : 1-2ug/ml Direct ELISA : 0.1-0.5ug/ml
Limitations	This CKB antibody is available for research use only.



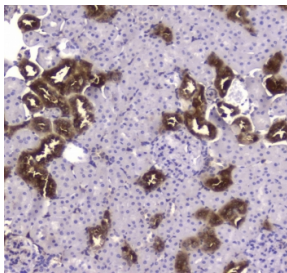
Western blot testing of human 1) HeLa, 2) placenta, 3) COLO-320, 4) SW620, 5) MDA-MB-231, 6) rat brain and 7) mouse brain lysate with CKB antibody at 0.5ug/ml. Predicted molecular weight ~43 kDa.



IHC testing of FFPE human colon cancer tissue with CKB antibody at 1ug/ml. Required HIER: steam section in pH6 citrate buffer for 20 min and allow to cool prior to staining.



IHC testing of FFPE mouse kidney tissue with CKB antibody at 1ug/ml. Required HIER: steam section in pH6 citrate buffer for 20 min and allow to cool prior to staining.



IHC testing of FFPE rat kidney tissue with CKB antibody at 1ug/ml. Required HIER: steam section in pH6 citrate buffer for 20 min and allow to cool prior to staining.

Description

Brain-type creatine kinase also known as CK-BB is a creatine kinase that in humans is encoded by the CKB gene. The protein encoded by this gene is a cytoplasmic enzyme involved in energy homeostasis. The encoded protein reversibly catalyzes the transfer of phosphate between ATP and various phosphogens such as creatine phosphate. It acts as a homodimer in brain as well as in other tissues, and as a heterodimer with a similar muscle isozyme in heart. The encoded protein is a member of the ATP:guanido phosphotransferase protein family. A pseudogene of this gene has been characterized.

Application Notes

Optimal dilution of the CKB antibody should be determined by the researcher.

Immunogen

A recombinant human protein corresponding to amino acids H7-K381 was used as the immunogen for the CKB antibody.

Storage

After reconstitution, the CKB antibody can be stored for up to one month at 4oC. For long-term, aliquot and store at -20oC. Avoid repeated freezing and thawing.

