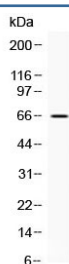


## CKAP4 Antibody (R32776)

Catalog No.	Formulation	Size
R32776	0.5mg/ml if reconstituted with 0.2ml sterile DI water	100 ug

**Bulk quote request**

<b>Availability</b>	1-3 business days
<b>Species Reactivity</b>	Mouse
<b>Format</b>	Antigen affinity purified
<b>Host</b>	Rabbit
<b>Clonality</b>	Polyclonal (rabbit origin)
<b>Isotype</b>	Rabbit IgG
<b>Purity</b>	Antigen affinity
<b>Buffer</b>	Lyophilized from 1X PBS with 2.5% BSA, 0.025% sodium azide
<b>UniProt</b>	Q8BMK4
<b>Applications</b>	Western Blot : 0.5-1ug/ml
<b>Limitations</b>	This CKAP4 antibody is available for research use only.



Western blot testing of mouse brain lysate with CKAP4 antibody at 0.5ug/ml. Predicted molecular weight ~64 kDa.

## Description

Cytoskeleton-associated protein 4, also known as CLIMP63 and p63, is a protein that in humans is encoded by the CKAP4 gene. It is mapped to 12q23.3. CKAP4 is found on the plasma membrane of select cells such as vascular smooth muscle and Type II Greater alveolar lung cells. It has a bimodal distribution. First, CKAP4 is found on the plasma membrane and serves as a receptor for SP-A/surfactant protein-A (in lung) and tPA (in vessels). Second, it is embedded in the membrane of a compartment that links the ER with the Golgi apparatus. This localization is dependent on its ability to form homooligomers, and its presence serves to anchor microtubules and direct the formation of tubular ER.

## Application Notes

Optimal dilution of the CKAP4 antibody should be determined by the researcher.

## Immunogen

Amino acids 95-118 (LVAAAFSGWYVHHVLEEVQQVRR) from the mouse protein were used as the immunogen for the CKAP4 antibody.

## Storage

After reconstitution, the CKAP4 antibody can be stored for up to one month at 4°C. For long-term, aliquot and store at -20°C. Avoid repeated freezing and thawing.