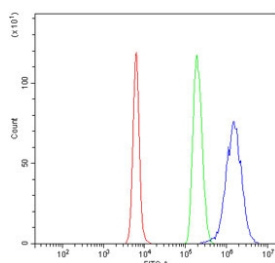


CINP Antibody (RQ5806)

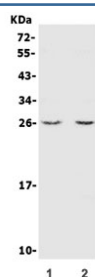
Catalog No.	Formulation	Size
RQ5806	0.5mg/ml if reconstituted with 0.2ml sterile DI water	100 ug

Bulk quote request

Availability	1-3 business days
Species Reactivity	Mouse
Format	Antigen affinity purified
Host	Rabbit
Clonality	Polyclonal (rabbit origin)
Isotype	Rabbit IgG
Purity	Affinity purified
Buffer	Lyophilized from 1X PBS with 2% Trehalose and 0.025% sodium azide
UniProt	Q9D0V8
Applications	Western Blot : 0.5-1ug/ml Flow Cytometry : 1-3ug/million cells
Limitations	This CINP antibody is available for research use only.



Flow cytometry testing of mouse RAW264.7 cells with CINP antibody at 1ug/million cells (blocked with goat sera); Red=cells alone, Green=isotype control, Blue= CINP antibody.



Western blot testing of mouse 1) lung and 2) RAW264.7 lysate with CINP antibody. Predicted molecular weight ~26 kDa.

Description

Cartilage intermediate layer protein 1 is a protein that in humans is encoded by the CILP gene. The protein encoded by this gene is reported to be a component of the DNA replication complex as well as a genome-maintenance protein. It may interact with proteins important for replication initiation and has been shown to bind chromatin at the G1 phase of the cell cycle and dissociate from chromatin with replication initiation. It may also serve to regulate checkpoint signaling as part of the DNA damage response. Alternative splicing results in multiple transcript variants.

Application Notes

Optimal dilution of the CINP antibody should be determined by the researcher.

Immunogen

Amino acids ARKLKDNAADWHNLILKWDSL from the mouse protein were used as the immunogen for the CINP antibody.

Storage

After reconstitution, the CINP antibody can be stored for up to one month at 4oC. For long-term, aliquot and store at -20oC. Avoid repeated freezing and thawing.