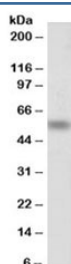


## CHRNE Antibody (R33589)

Catalog No.	Formulation	Size
R33589-100UG	0.5 mg/ml in 1X TBS, pH7.3, with 0.5% BSA (US sourced) and 0.02% sodium azide	100 ug

[Bulk quote request](#)

Availability	1-3 business days
Species Reactivity	Human, Mouse, Rat
Format	Antigen affinity purified
Clonality	Polyclonal (goat origin)
Isotype	Goat Ig
Purity	Antigen affinity
Gene ID	1145
Applications	Western Blot : 1-3ug/ml ELISA (peptide) LOD : 1:1000
Limitations	This CHRNE antibody is available for research use only.



Western blot testing of mouse fetal skeletal muscle lysate with CHRNE antibody at 1ug/ml. Predicted molecular weight: ~55kDa.

## Description

Additional name(s) for this target protein: Cholinergic receptor, nicotinic, epsilon

## Application Notes

Optimal dilution of the CHRNE antibody should be determined by the researcher.

## Immunogen

Amino acids DQEATGEEVSD were used as the immunogen for this CHRNE antibody.

## Storage

Aliquot and store the CHRNE antibody at -20oC.