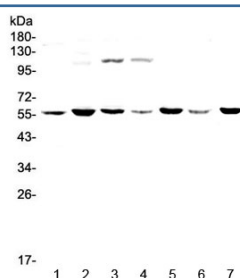


## CHRNA3 Antibody (RQ4415)

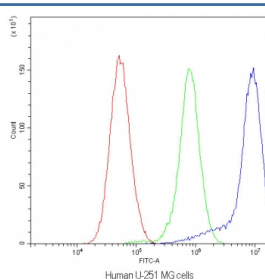
Catalog No.	Formulation	Size
RQ4415	0.5mg/ml if reconstituted with 0.2ml sterile DI water	100 ug

**Bulk quote request**

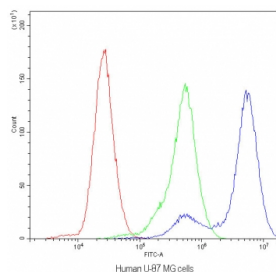
<b>Availability</b>	1-3 business days
<b>Species Reactivity</b>	Human, Mouse, Rat
<b>Format</b>	Antigen affinity purified
<b>Host</b>	Rabbit
<b>Clonality</b>	Polyclonal (rabbit origin)
<b>Isotype</b>	Rabbit IgG
<b>Purity</b>	Antigen affinity purified
<b>Buffer</b>	Lyophilized from 1X PBS with 2% Trehalose and 0.025% sodium azide
<b>UniProt</b>	P32297
<b>Applications</b>	Western Blot : 0.5-1ug/ml Flow Cytometry : 1-3ug/10 <sup>6</sup> cells
<b>Limitations</b>	This CHRNA3 antibody is available for research use only.



Western blot testing of human 1) HeLa, 2) MDA-MB-453, 3) Jurkat, 4) HepG2, 5) SK-OV-3, 6) PANC-1 and 7) mouse thymus lysate with CHRNA3 antibody at 0.5ug/ml. Predicted molecular weight ~57 kDa.



Flow cytometry testing of human U-251 MG cells with CHRNA3 antibody at 1ug/10<sup>6</sup> cells (blocked with goat sera); Red=cells alone, Green=isotype control, Blue=CHRNA3 antibody.



Flow cytometry testing of human U-87 MG cells with CHRNA3 antibody at 1ug/10<sup>6</sup> cells (blocked with goat sera); Red=cells alone, Green=isotype control, Blue=CHRNA3 antibody.

## Description

After binding acetylcholine, Nicotinic Acetylcholine Receptor alpha 3 (CHRNA3) responds by an extensive change in conformation that affects all subunits and leads to opening of an ion-conducting channel across the plasma membrane. [UniProt]

## Application Notes

Optimal dilution of the CHRNA3 antibody should be determined by the researcher.

## Immunogen

Amino acids DAVLSLSALSPEIKEAIQSVKYIAENMKAAQNEAKEIQD from the human protein were used as the immunogen for the CHRNA3 antibody.

## Storage

After reconstitution, the CHRNA3 antibody can be stored for up to one month at 4oC. For long-term, aliquot and store at -20oC. Avoid repeated freezing and thawing.