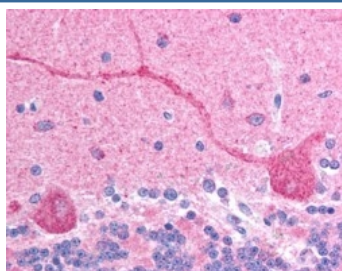


CHFR Antibody (R34433)

| Catalog No. | Formulation | Size |
|--------------|---|--------|
| R34433-100UG | 0.5 mg/ml in 1X TBS, pH7.3, with 0.5% BSA (US sourced) and 0.02% sodium azide | 100 ug |

[Bulk quote request](#)

| | |
|----------------------|---|
| Availability | 1-3 business days |
| Species Reactivity | Human |
| Predicted Reactivity | Cow, Mouse, Pig, Rat |
| Format | Antigen affinity purified |
| Clonality | Polyclonal (goat origin) |
| Isotype | Goat Ig |
| Purity | Antigen affinity |
| Gene ID | 55743 |
| Applications | Immunohistochemistry (FFPE) : 2.5ug/ml ELISA (peptide) LOD : 1:64000 |
| Limitations | This CHFR antibody is available for research use only. |



IHC testing of FFPE human cerebellum with CHFR antibody at 2.5ug/ml. HIER: steamed with pH6 citrate buffer, AP-staining.

Description

Additional name(s) for this target protein: Checkpoint with forkhead and ring finger domains

Application Notes

Optimal dilution of the CHFR antibody should be determined by the researcher.

Immunogen

Amino acids KFNHICEQTRFKN were used as the immunogen for this CHFR antibody.

Storage

Aliquot and store the CHFR antibody at -20oC.