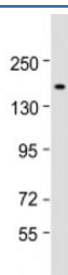


## CHD5 Antibody (F53930)

Catalog No.	Formulation	Size
F53930-0.05ML	In 1X PBS, pH 7.4, with 0.09% sodium azide	0.05 ml

**Bulk quote request**

<b>Availability</b>	1-3 business days
<b>Species Reactivity</b>	Human
<b>Format</b>	Antigen affinity purified
<b>Clonality</b>	Polyclonal (rabbit origin)
<b>Isotype</b>	Rabbit Ig
<b>Purity</b>	Antigen affinity
<b>UniProt</b>	Q8TDI0
<b>Applications</b>	Western Blot : 1:1000-2000
<b>Limitations</b>	This CHD5 antibody is available for research use only.



Western blot testing of human HeLa cell lysate with CHD5 antibody at 1:2000. Predicted molecular weight: 223 kDa.

## Description

Chromodomain-helicase-DNA-binding protein 5 is a chromatin-remodeling protein that binds DNA through histones and regulates gene transcription. May specifically recognize and bind trimethylated 'Lys-27' (H3K27me3) and non- methylated 'Lys-4' of histone H3. Plays a role in the development of the nervous system by activating the expression of genes promoting neuron terminal differentiation. In parallel, it may also positively regulate the trimethylation of histone H3 at 'Lys- 27' thereby specifically repressing genes that promote the differentiation into non-neuronal cell lineages. Tumor suppressor, it regulates the expression of genes involved in cell proliferation and differentiation. Downstream activated genes may include CDKN2A that positively regulates the p53/TP53 pathway, which in turn, prevents cell proliferation. In spermatogenesis, it probably regulates histone hyperacetylation and the replacement of histones by transition proteins in chromatin, a crucial step in the condensation of spermatid chromatin and the production of functional spermatozoa.

## Application Notes

Titration of the CHD5 antibody may be required due to differences in protocols and secondary/substrate sensitivity.

## Immunogen

A portion of amino acids 64-98 from the human protein was used as the immunogen for the CHD5 antibody.

## Storage

Aliquot the CHD5 antibody and store frozen at -20oC or colder. Avoid repeated freeze-thaw cycles.