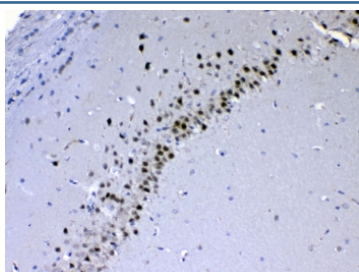


## CHD2 Antibody (R32953)

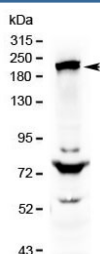
Catalog No.	Formulation	Size
R32953	0.5mg/ml if reconstituted with 0.2ml sterile DI water	100 ug

**Bulk quote request**

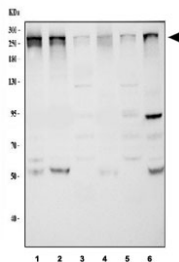
<b>Availability</b>	1-3 business days
<b>Species Reactivity</b>	Human, Mouse, Rat, Monkey
<b>Format</b>	Antigen affinity purified
<b>Host</b>	Rabbit
<b>Clonality</b>	Polyclonal (rabbit origin)
<b>Isotype</b>	Rabbit IgG
<b>Purity</b>	Antigen affinity
<b>Buffer</b>	Lyophilized from 1X PBS with 2.5% BSA, 0.025% sodium azide
<b>UniProt</b>	O14647
<b>Localization</b>	Nuclear
<b>Applications</b>	Western Blot : 0.5-1ug/ml Immunohistochemistry (FFPE) : 1-2ug/ml
<b>Limitations</b>	This CHD2 antibody is available for research use only.



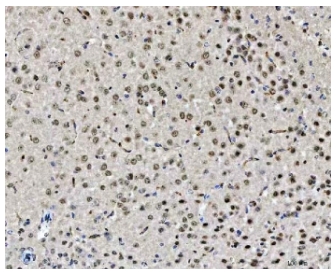
IHC testing of FFPE rat brain tissue with CHD2 antibody at 1ug/ml. Required HIER: steam section in pH6 citrate buffer for 20 min and allow to cool prior to testing.



Western blot testing of human HepG2 cell lysate with CHD2 antibody at 0.5ug/ml. Predicted molecular weight ~211 kDa, commonly observed from 211-260 kDa.



Western blot testing of 1) monkey COS-7, 2) human SiHa, 3) rat brain, 4) rat C6, 5) mouse brain and 6) mouse NIH-3T3 cell lysate with CHD2 antibody at 0.5ug/ml. Predicted molecular weight ~211 kDa, commonly observed from 211-260 kDa.



IHC testing of FFPE mouse brain tissue with CHD2 antibody at 1ug/ml. Required HIER: steam section in pH6 citrate buffer for 20 min and allow to cool prior to testing.

## Description

Chromodomain-helicase-DNA-binding protein 2 is an enzyme that in humans is encoded by the CHD2 gene. The CHD family of proteins is characterized by the presence of chromo (chromatin organization modifier) domains and SNF2-related helicase/ATPase domains. CHD genes alter gene expression possibly by modification of chromatin structure thus altering access of the transcriptional apparatus to its chromosomal DNA template. CHD2 catalyzes the assembly of chromatin into periodic arrays; and the N-terminal region of CHD2, which contains tandem chromodomains, serves an auto-inhibitory role in both the DNA-binding and ATPase activities of CHD2.

## Application Notes

Optimal dilution of the CHD2 antibody should be determined by the researcher.

## Immunogen

A recombinant human protein corresponding to amino acids R1124-K1351 was used as the immunogen for the CHD2 antibody.

## Storage

After reconstitution, the CHD2 antibody can be stored for up to one month at 4oC. For long-term, aliquot and store at -20oC. Avoid repeated freezing and thawing.