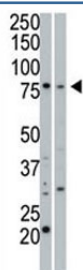


## cGKI beta Antibody (F40166)

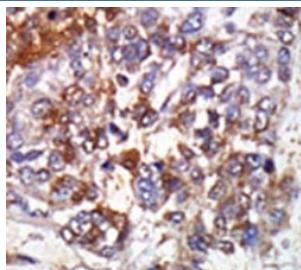
Catalog No.	Formulation	Size
F40166-0.4ML	In 1X PBS, pH 7.4, with 0.09% sodium azide	0.4 ml
F40166-0.08ML	In 1X PBS, pH 7.4, with 0.09% sodium azide	0.08 ml

[Bulk quote request](#)

<b>Availability</b>	1-3 business days
<b>Species Reactivity</b>	Human, Mouse
<b>Predicted Reactivity</b>	Bovine
<b>Format</b>	Purified
<b>Host</b>	Rabbit
<b>Clonality</b>	Polyclonal (rabbit origin)
<b>Isotype</b>	Rabbit Ig
<b>Purity</b>	Purified
<b>UniProt</b>	Q13976
<b>Applications</b>	Western Blot : 1:1000 IHC (Paraffin) : 1:50-1:100
<b>Limitations</b>	This cGKI beta antibody is available for research use only.



cGKI beta antibody used in western blot to detect cGKIbeta in 293 cell lysate (Lane 1) and mouse small intestine tissue lysate (2).



IHC analysis of FFPE human hepatocarcinoma stained with the cGKI beta antibody

## Description

Protein kinases are enzymes that transfer a phosphate group from a phosphate donor, generally the γ phosphate of ATP, onto an acceptor amino acid in a substrate protein. By this basic mechanism, protein kinases mediate most of the signal transduction in eukaryotic cells, regulating cellular metabolism, transcription, cell cycle progression, cytoskeletal rearrangement and cell movement, apoptosis, and differentiation. With more than 500 gene products, the protein kinase family is one of the largest families of proteins in eukaryotes. The family has been classified in 8 major groups based on sequence comparison of their tyrosine (PTK) or serine/threonine (STK) kinase catalytic domains.

## Application Notes

Titration of the cGKI beta antibody may be required due to differences in protocols and secondary/substrate sensitivity.

## Immunogen

A portion of amino acids 629-660 from the human protein was used as the immunogen for this cGKI beta antibody.

## Storage

Aliquot the cGKI beta antibody and store frozen at -20°C or colder. Avoid repeated freeze-thaw cycles.