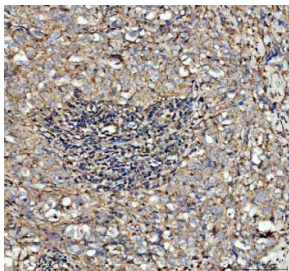


CFD Antibody / Complement Factor D (RQ4073)

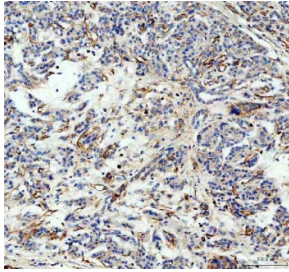
Catalog No.	Formulation	Size
RQ4073	0.5mg/ml if reconstituted with 0.2ml sterile DI water	100 ug

Bulk quote request

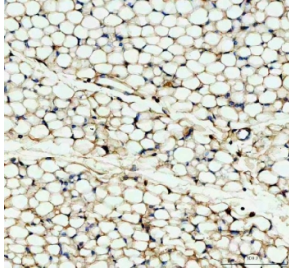
Availability	1-3 business days
Species Reactivity	Human, Mouse, Rat
Format	Antigen affinity purified
Host	Rabbit
Clonality	Polyclonal (rabbit origin)
Isotype	Rabbit IgG
Purity	Antigen affinity purified
Buffer	Lyophilized from 1X PBS with 2% Trehalose
UniProt	P00746
Localization	Secreted
Applications	Western Blot : 0.5-1ug/ml Immunohistochemistry (FFPE) : 2-5ug/ml Direct ELISA : 0.1-0.5ug/ml
Limitations	This CFD antibody is available for research use only.



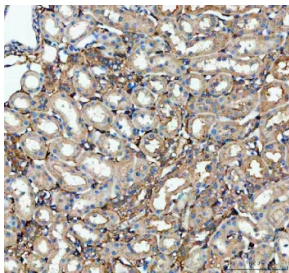
IHC staining of FFPE human breast cancer tissue with CFD antibody. Required HIER: steam section in pH8 EDTA buffer for 20 min and allow to cool prior to testing.



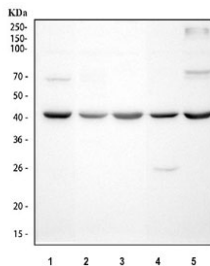
IHC staining of FFPE human pancreatic cancer tissue with CFD antibody. Required HIER: steam section in pH8 EDTA buffer for 20 min and allow to cool prior to testing.



IHC staining of FFPE mouse adipose tissue with CFD antibody. Required HIER: steam section in pH8 EDTA buffer for 20 min and allow to cool prior to testing.



IHC staining of FFPE rat kidney tissue with CFD antibody. Required HIER: steam section in pH8 EDTA buffer for 20 min and allow to cool prior to testing.



Western blot testing of 1) human ThP-1, 2) human HeLa, 3) rat lung, 4) mouse lung and 5) mouse NIH 3T3 cell lysate with CFD antibody. Predicted molecular weight ~27 kDa.

Description

Factor D is a protein which in humans is encoded by the CFD gene. The protein encoded by this gene is a member of the trypsin family of peptidases. The encoded protein is a component of the alternative complement pathway best known for its role in humoral suppression of infectious agents. It is also a serine protease that is secreted by adipocytes into the bloodstream. And it stimulates glucose transport for triglyceride accumulation in fats cells and inhibits lipolysis. Finally, the encoded protein has a high level of expression in fat, suggesting a role for adipose tissue in immune system biology.

Application Notes

Optimal dilution of the CFD antibody should be determined by the researcher.

Immunogen

A recombinant human partial protein corresponding to amino acids I26-A253 was used as the immunogen for the CFD antibody.

Storage

After reconstitution, the CFD antibody can be stored for up to one month at 4°C. For long-term, aliquot and store at

-20oC. Avoid repeated freezing and thawing.