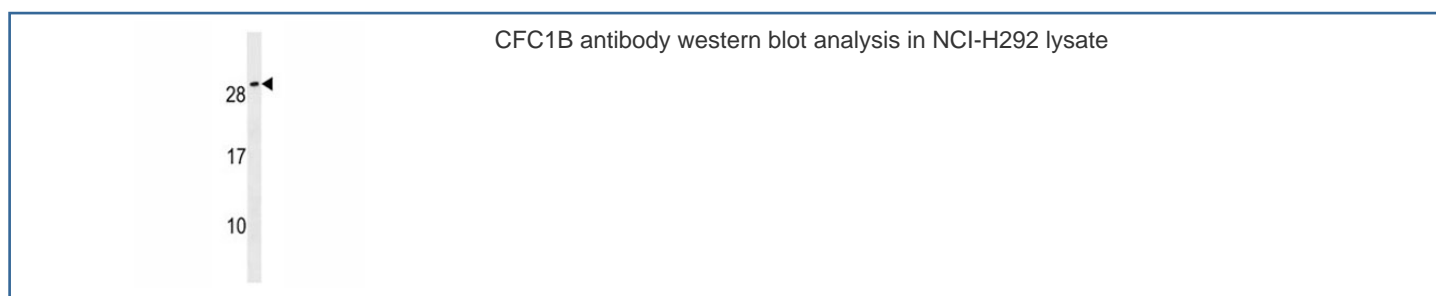


CFC1B Antibody (F40045)

Catalog No.	Formulation	Size
F40045-0.4ML	In 1X PBS, pH 7.4, with 0.09% sodium azide	0.4 ml
F40045-0.08ML	In 1X PBS, pH 7.4, with 0.09% sodium azide	0.08 ml

[Bulk quote request](#)

Availability	1-3 business days
Species Reactivity	Human
Format	Antigen affinity purified
Host	Rabbit
Clonality	Polyclonal (rabbit origin)
Isotype	Rabbit Ig
Purity	Antigen affinity
UniProt	P0CG36
Applications	Western Blot : 1:1000
Limitations	This CFC1B antibody is available for research use only.



Description

CFC1 is involved in the correct establishment of the left-right axis. It may play a role in mesoderm and/or neural patterning during gastrulation.

Application Notes

Titration of the CFC1B antibody may be required due to differences in protocols and secondary/substrate sensitivity.

Immunogen

A portion of amino acids 20-48 from the human protein was used as the immunogen for this CFC1B antibody.

Storage

Aliquot the CFC1B antibody and store frozen at -20oC or colder. Avoid repeated freeze-thaw cycles.