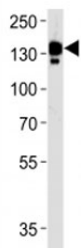


Ceruloplasmin Antibody (F50323)

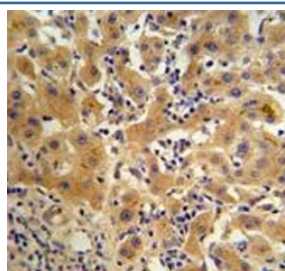
Catalog No.	Formulation	Size
F50323-0.4ML	In 1X PBS, pH 7.4, with 0.09% sodium azide	0.4 ml
F50323-0.08ML	In 1X PBS, pH 7.4, with 0.09% sodium azide	0.08 ml

[Bulk quote request](#)

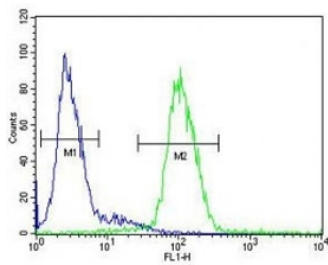
Availability	1-3 business days
Species Reactivity	Human, Mouse
Format	Purified
Clonality	Polyclonal (rabbit origin)
Isotype	Rabbit Ig
Purity	Purified
UniProt	P00450
Localization	Cytoplasmic
Applications	Western Blot : 1:1000 IHC (Paraffin) : 1:50-1:100 Flow Cytometry : 1:10-1:50
Limitations	This Ceruloplasmin antibody is available for research use only.



Ceruloplasmin antibody western blot analysis in human blood plasma lysate. Predicted molecular weight ~130 kDa.



Ceruloplasmin antibody IHC analysis in formalin fixed and paraffin embedded human hepatocarcinoma



Ceruloplasmin antibody flow cytometric analysis of HepG2 cells (green) compared to a [negative control](#) (blue).

Description

Ceruloplasmin (CP) is a metalloprotein that binds most of the copper in plasma and is involved in the peroxidation of Fe(II)transferrin to Fe(III) transferrin. Mutations in this protein cause aceruloplasminemia, which results in iron accumulation and tissue damage, and is associated with diabetes and neurologic abnormalities.

Application Notes

Titration of the Ceruloplasmin antibody may be required due to differences in protocols and secondary/substrate sensitivity.

Immunogen

A portion of amino acids 121-151 from the human protein was used as the immunogen for this Ceruloplasmin antibody.

Storage

Aliquot the Ceruloplasmin antibody and store frozen at -20oC or colder. Avoid repeated freeze-thaw cycles.