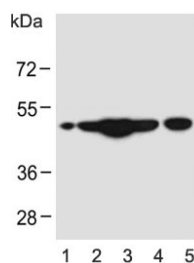


CEPT1 Antibody (F54338)

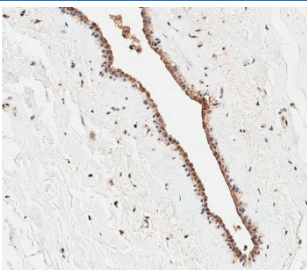
Catalog No.	Formulation	Size
F54338-0.4ML	In 1X PBS, pH 7.4, with 0.09% sodium azide	0.4 ml
F54338-0.08ML	In 1X PBS, pH 7.4, with 0.09% sodium azide	0.08 ml

[Bulk quote request](#)

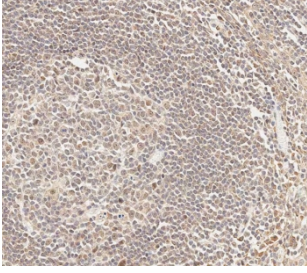
Availability	1-3 business days
Species Reactivity	Human, Mouse
Format	Purified
Host	Rabbit
Clonality	Polyclonal (rabbit origin)
Isotype	Rabbit Ig
Purity	Antigen affinity purified
UniProt	Q9Y6K0
Localization	Nuclear, cytoplasmic
Applications	Immunohistochemistry (FFPE) : 1:25 Western Blot : 1:500-1:2000
Limitations	This CEPT1 antibody is available for research use only.



Western blot testing of human 1) HL60, 2) HeLa, 3) cerebellum, 4) SK-BR-3 and 5) mouse brain lysate with CEPT1 antibody. Predicted molecular weight ~47 kDa.



IHC testing of FFPE human breast tissue with CEPT1 antibody. HIER: steam section in pH9 EDTA for 20 min and allow to cool prior to staining.



IHC testing of FFPE human tonsil tissue with CEPT1 antibody. HIER: steam section in pH9 EDTA for 20 min and allow to cool prior to staining.

Description

Cholinephosphotransferase catalyses the final step in the synthesis of phosphatidylcholine by the transfer of phosphocholine from CDP-choline to diacylglycerol. The synthesis of phosphatidylethanolamine by ethanolaminephosphotransferase occurs using an analogous reaction. This gene codes for a choline/ethanolaminephosphotransferase. The protein can synthesize either choline- or ethanolamine- containing phospholipids. Two alternatively spliced transcripts encoding the same isoform have been identified.

Application Notes

The stated application concentrations are suggested starting points. Titration of the CEPT1 antibody may be required due to differences in protocols and secondary/substrate sensitivity.

Immunogen

A portion of amino acids 29-57 from the human protein was used as the immunogen for the CEPT1 antibody.

Storage

Aliquot the CEPT1 antibody and store frozen at -20oC or colder. Avoid repeated freeze-thaw cycles.