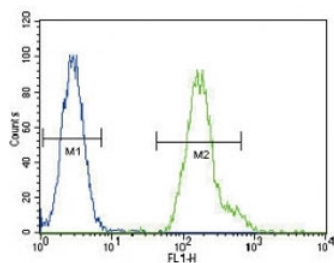


CEBPA Antibody (F51744)

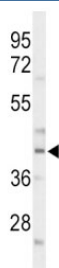
| Catalog No. | Formulation | Size |
|---------------|--|---------|
| F51744-0.4ML | In 1X PBS, pH 7.4, with 0.09% sodium azide | 0.4 ml |
| F51744-0.08ML | In 1X PBS, pH 7.4, with 0.09% sodium azide | 0.08 ml |

[Bulk quote request](#)

| | |
|-----------------------------|---|
| Availability | 1-3 business days |
| Species Reactivity | Human, Mouse |
| Predicted Reactivity | Bovine, Rat |
| Format | Antigen affinity purified |
| Host | Rabbit |
| Clonality | Polyclonal (rabbit origin) |
| Isotype | Rabbit Ig |
| Purity | Antigen affinity |
| UniProt | P49715 |
| Applications | Western Blot : 1:1000 Flow Cytometry : 1:10-1:50 |
| Limitations | This CEBPA antibody is available for research use only. |



CEBPA antibody flow cytometric analysis of HeLa cells (green) compared to a [negative control](#) (blue). FITC-conjugated goat-anti-rabbit secondary Ab was used for the analysis.



Western blot analysis of CEBPA antibody and mouse liver tissue lysate.

Description

CEBPA is a bZIP transcription factor which can bind as a homodimer to certain promoters and enhancers. It can also form heterodimers with the related proteins CEBP-beta and CEBP-gamma. This protein has been shown to bind to the promoter and modulate the expression of the gene encoding leptin, a protein that plays an important role in body weight homeostasis. Also, the protein can interact with CDK2 and CDK4, thereby inhibiting these kinases and causing growth arrest in cultured cells.

Application Notes

Titration of the CEBPA antibody may be required due to differences in protocols and secondary/substrate sensitivity.

Immunogen

A portion of amino acids 304-330 from the human protein was used as the immunogen for this CEBPA antibody.

Storage

Aliquot the CEBPA antibody and store frozen at -20oC or colder. Avoid repeated freeze-thaw cycles.