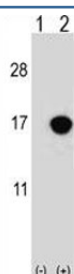


CDKN2B Antibody (F42340)

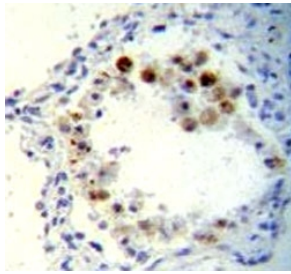
Catalog No.	Formulation	Size
F42340-0.4ML	In 1X PBS, pH 7.4, with 0.09% sodium azide	0.4 ml
F42340-0.08ML	In 1X PBS, pH 7.4, with 0.09% sodium azide	0.08 ml

[Bulk quote request](#)

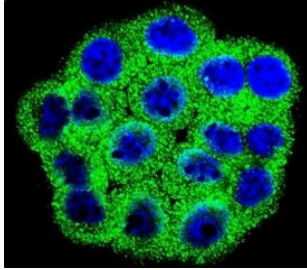
Availability	1-3 business days
Species Reactivity	Human
Format	Antigen affinity purified
Host	Rabbit
Clonality	Polyclonal (rabbit origin)
Isotype	Rabbit Ig
Purity	Antigen affinity
UniProt	P42772
Applications	Western Blot : 1:1000 IHC (Paraffin) : 1:10-1:50 Immunofluorescence : 1:10-1:50 Flow Cytometry : 1:10-1:50
Limitations	This CDKN2B antibody is available for research use only.



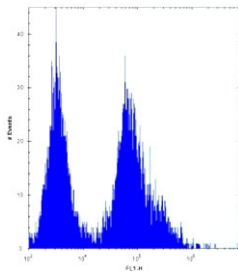
Western blot analysis of CDKN2B antibody and 293 cell lysate either nontransfected (Lane 1) or transiently transfected (2) with the CDKN2B gene.



CDKN2B antibody immunohistochemistry analysis in formalin fixed and paraffin embedded human lung tissue



Confocal immunofluorescent analysis of CDKN2B antibody with HeLa cells followed by Alexa Fluor 488-conjugated goat anti-rabbit IgG (green). DAPI was used as a nuclear counterstain (blue).



CDKN2B antibody flow cytometric analysis of 293 cells (right histogram) compared to a [negative control](#) (left histogram). FITC-conjugated goat-anti-rabbit secondary Ab was used for the analysis.

Description

This gene lies adjacent to the tumor suppressor gene CDKN2A in a region that is frequently mutated and deleted in a wide variety of tumors. This gene encodes a cyclin-dependent kinase inhibitor, which forms a complex with CDK4 or CDK6, and prevents the activation of the CDK kinases, thus the encoded protein functions as a cell growth regulator that controls cell cycle G1 progression. The expression of this gene was found to be dramatically induced by TGF beta, which suggested its role in the TGF beta induced growth inhibition. Two alternatively spliced transcript variants of this gene, which encode distinct proteins, have been reported.

Application Notes

Titration of the CDKN2B antibody may be required due to differences in protocols and secondary/substrate sensitivity.

Immunogen

A portion of amino acids 102-130 from the human protein was used as the immunogen for this CDKN2B antibody.

Storage

Aliquot the CDKN2B antibody and store frozen at -20oC or colder. Avoid repeated freeze-thaw cycles.

