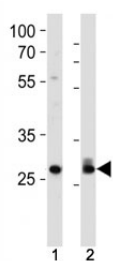


## CDK2 Antibody (F50475)

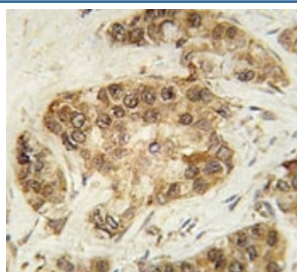
Catalog No.	Formulation	Size
F50475-0.4ML	In 1X PBS, pH 7.4, with 0.09% sodium azide	0.4 ml
F50475-0.08ML	In 1X PBS, pH 7.4, with 0.09% sodium azide	0.08 ml

[Bulk quote request](#)

<b>Availability</b>	1-3 business days
<b>Species Reactivity</b>	Human
<b>Predicted Reactivity</b>	Mouse, Rat, Bovine, Hamster, Xenopus
<b>Format</b>	Antigen affinity purified
<b>Host</b>	Rabbit
<b>Clonality</b>	Polyclonal (rabbit origin)
<b>Isotype</b>	Rabbit Ig
<b>Purity</b>	Antigen affinity
<b>UniProt</b>	P24941
<b>Applications</b>	Western Blot : 1:1000 IHC (Paraffin) : 1:10-1:50
<b>Limitations</b>	This CDK2 antibody is available for research use only.



Cdk2 antibody western blot analysis in 293, HeLa lysate. Predicted molecular weight ~33 kDa.



IHC analysis of FFPE human breast carcinoma tissue stained with CDK2 antibody

## Description

CDK2 is a member of the Ser/Thr protein kinase family. This protein kinase is highly similar to the gene products of *S. cerevisiae* cdc28, and *S. pombe* cdc2. It is a catalytic subunit of the cyclin-dependent protein kinase complex, whose activity is restricted to the G1-S phase, and essential for cell cycle G1/S phase transition. This protein associates with and is regulated by the regulatory subunits of the complex including cyclin A or E, CDK inhibitor p21Cip1 (CDKN1A) and p27Kip1 (CDKN1B). Its activity is also regulated by its protein phosphorylation.

## Application Notes

Titration of the CDK2 antibody may be required due to differences in protocols and secondary/substrate sensitivity.

## Immunogen

A portion of amino acids 1-30 from the human protein was used as the immunogen for this CDK2 antibody.

## Storage

Aliquot the CDK2 antibody and store frozen at -20oC or colder. Avoid repeated freeze-thaw cycles.