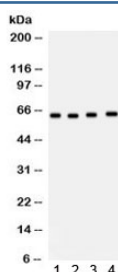


CDC6 Antibody (R32314)

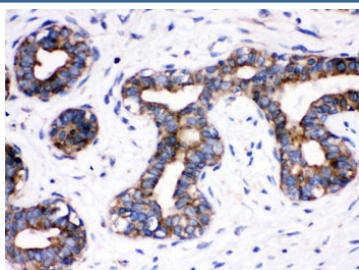
Catalog No.	Formulation	Size
R32314	0.5mg/ml if reconstituted with 0.2ml sterile DI water	100 ug

Bulk quote request

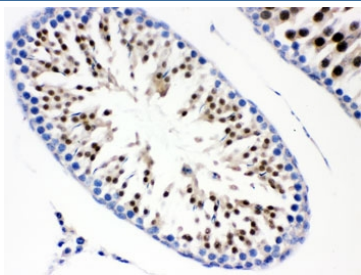
Availability	1-3 business days
Species Reactivity	Human, Rat
Format	Antigen affinity purified
Host	Rabbit
Clonality	Polyclonal (rabbit origin)
Isotype	Rabbit IgG
Purity	Antigen affinity
Buffer	Lyophilized from 1X PBS with 2.5% BSA and 0.025% sodium azide
UniProt	Q99741
Localization	Nuclear
Applications	Western Blot : 0.1-0.5ug/ml IHC (FFPE) : 0.5-1ug/ml
Limitations	This CDC6 antibody is available for research use only.



Western blot testing of 1) rat brain, 2) human Jurkat, 3) MM231 and 4) HT1080 lysate with CDC6 antibody. Predicted/observed molecular weight: ~62 kDa.



IHC testing of FFPE human breast cancer with CDC6 antibody. HIER: Boil the paraffin sections in pH 6, 10mM citrate buffer for 20 minutes and allow to cool prior to staining.



IHC testing of FFPE rat testis with CDC6 antibody. HIER: Boil the paraffin sections in pH 6, 10mM citrate buffer for 20 minutes and allow to cool prior to staining.

Description

Cell division control protein 6 homolog, also called CDC18L or CDC6, is a protein that in humans is encoded by the CDC6 gene. By analysis of somatic cell hybrids and by fluorescence in situ hybridization, this gene is mapped to 17q21.2. The protein encoded by this gene is highly similar to *Saccharomyces cerevisiae* Cdc6, a protein essential for the initiation of DNA replication. And this protein functions as a regulator at the early steps of DNA replication. It localizes in cell nucleus during cell cycle G1, but translocates to the cytoplasm at the start of S phase. The subcellular translocation of this protein during cell cycle is regulated through its phosphorylation by Cdks. Transcription of this protein was reported to be regulated in response to mitogenic signals through transcriptional control mechanism involving E2F proteins. This gene is involved in the initiation of DNA replication.

Application Notes

Optimal dilution of the CDC6 antibody should be determined by the researcher.

Immunogen

Amino acids 147-549 of human CDC6 were used as the immunogen for the CDC6 antibody.

Storage

After reconstitution, the CDC6 antibody can be stored for up to one month at 4°C. For long-term, aliquot and store at -20°C. Avoid repeated freezing and thawing.