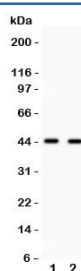


Cdc37 Antibody (R31256)

Catalog No.	Formulation	Size
R31256	0.5mg/ml if reconstituted with 0.2ml sterile DI water	100 ug

[Bulk quote request](#)

Availability	1-3 business days
Species Reactivity	Human
Format	Antigen affinity purified
Host	Rabbit
Clonality	Polyclonal (rabbit origin)
Isotype	Rabbit IgG
Purity	Antigen affinity
Buffer	Lyophilized from 1X PBS with 2.5% BSA and 0.025% sodium azide/thimerosal
UniProt	Q16543
Applications	Western Blot : 0.5-1ug/ml
Limitations	This Cdc37 antibody is available for research use only.



Western blot testing of Cdc37 antibody and 1. Jurkat, 2. 293T cell lysate.
Expected/observed molecular weight 44~50kDa.

Description

Hsp90 co-chaperone Cdc37 is a protein that in humans is encoded by the CDC37 gene. The protein encoded by this gene is highly similar to cdc 37, a cell division cycle control protein of *Saccharomyces cerevisiae*. This gene is mapped to 19p13.2. This protein is a molecular chaperone with specific function in cell signal transduction. It has been shown to form complex with Hsp90 and a variety of protein kinases including CDK4, CDK6, SRC, RAF-1, MOK, as well as eIF2 alpha kinases. It is thought to play a critical role in directing Hsp90 to its target kinases.

Application Notes

The stated application concentrations are suggested starting amounts. Titration of the Cdc37 antibody may be required due to differences in protocols and secondary/substrate sensitivity.

Immunogen

An amino acid sequence from the C-terminus of human Cdc37 (DPLLEAVPKTGDEKDV) was used as the immunogen for this Cdc37 antibody.

Storage

After reconstitution, the Cdc37 antibody can be stored for up to one month at 4oC. For long-term, aliquot and store at -20oC. Avoid repeated freezing and thawing.