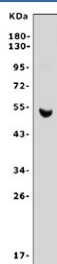


Cdc25c Antibody (RQ6244)

| Catalog No. | Formulation | Size |
|-------------|---|--------|
| RQ6244 | 0.5mg/ml if reconstituted with 0.2ml sterile DI water | 100 ug |

Bulk quote request

| | |
|---------------------------|--|
| Availability | 1-3 business days |
| Species Reactivity | Rat |
| Format | Antigen affinity purified |
| Host | Rabbit |
| Clonality | Polyclonal (rabbit origin) |
| Isotype | Rabbit IgG |
| Purity | Affinity purified |
| Buffer | Lyophilized from 1X PBS with 2% Trehalose |
| UniProt | P48967 |
| Applications | Western Blot : 1-2ug/ml |
| Limitations | This Cdc25c antibody is available for research use only. |



Western blot testing of rat pancreas tissue lysate with Cdc25c antibody. Predicted molecular weight ~53 kDa.

Description

M-phase inducer phosphatase 3 is an enzyme that in humans is encoded by the CDC25C gene. This gene is highly conserved during evolution and it plays a key role in the regulation of cell division. The encoded protein is a tyrosine phosphatase and belongs to the Cdc25 phosphatase family. It directs dephosphorylation of cyclin B-bound CDC2 (CDK1) and triggers entry into mitosis. Also, it is thought to suppress p53-induced growth arrest. Multiple alternatively spliced transcript variants of this gene have been described, however, the full-length nature of many of them is not known.

Application Notes

Optimal dilution of the Cdc25c antibody should be determined by the researcher.

Immunogen

A mouse recombinant partial protein (amino acids K24-Q447) was used as the immunogen for the Cdc25c antibody.

Storage

After reconstitution, the Cdc25c antibody can be stored for up to one month at 4oC. For long-term, aliquot and store at -20oC. Avoid repeated freezing and thawing.