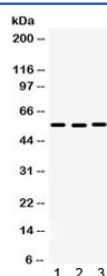


## CDC25C Antibody (R32057)

Catalog No.	Formulation	Size
R32057	0.5mg/ml if reconstituted with 0.2ml sterile DI water	100 ug

**Bulk quote request**

<b>Availability</b>	1-3 business days
<b>Species Reactivity</b>	Human
<b>Format</b>	Antigen affinity purified
<b>Host</b>	Rabbit
<b>Clonality</b>	Polyclonal (rabbit origin)
<b>Isotype</b>	Rabbit IgG
<b>Purity</b>	Antigen affinity
<b>Buffer</b>	Lyophilized from 1X PBS with 2.5% BSA and 0.025% sodium azide
<b>UniProt</b>	P30307
<b>Applications</b>	Western Blot : 0.1-0.5ug/ml
<b>Limitations</b>	This CDC25C antibody is available for research use only.



Western blot testing of human 1) HeLa, 2) SW620 and 3) MCF7 lysate with CDC25C antibody. Expected molecular weight: ~53/60 kDa (unmodified/phosphorylated).

## Description

M-phase inducer phosphatase 3 is an enzyme that in humans is encoded by the CDC25C gene. This gene is highly conserved during evolution and it plays a key role in the regulation of cell division. The encoded protein is a tyrosine phosphatase and belongs to the Cdc25 phosphatase family. It directs dephosphorylation of cyclin B-bound CDC2 (CDK1) and triggers entry into mitosis. Also, it is thought to suppress p53-induced growth arrest. Multiple alternatively spliced transcript variants of this gene have been described, however, the full-length nature of many of them is not known.

## Application Notes

Optimal dilution of the CDC25C antibody should be determined by the researcher.

## Immunogen

Amino acids MHHQDHKTELLRCRSQSKVQEGERQLREQIALLVKDMSP of human CDC25C were used as the immunogen for the CDC25C antibody.

## Storage

After reconstitution, the CDC25C antibody can be stored for up to one month at 4oC. For long-term, aliquot and store at -20oC. Avoid repeated freezing and thawing.