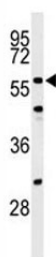


## CDC25C Antibody (F50838)

Catalog No.	Formulation	Size
F50838-0.4ML	In 1X PBS, pH 7.4, with 0.09% sodium azide	0.4 ml
F50838-0.08ML	In 1X PBS, pH 7.4, with 0.09% sodium azide	0.08 ml

[Bulk quote request](#)

<b>Availability</b>	1-3 business days
<b>Species Reactivity</b>	Human, Mouse
<b>Format</b>	Purified
<b>Clonality</b>	Polyclonal (rabbit origin)
<b>Isotype</b>	Rabbit Ig
<b>Purity</b>	Purified
<b>UniProt</b>	P30307
<b>Applications</b>	Western Blot : 1:1000
<b>Limitations</b>	This CDC25C antibody is available for research use only.



Western blot analysis of CDC25C antibody and NIH3T3 lysate. Expected molecular weight: ~53/60 kDa (unmodified/phosphorylated).

## Description

CDC25C is a tyrosine phosphatase and belongs to the Cdc25 phosphatase family. It directs dephosphorylation of cyclin B-bound CDC2 and triggers entry into mitosis. It is also thought to suppress p53-induced growth arrest.

## Application Notes

Titration of the CDC25C antibody may be required due to differences in protocols and secondary/substrate sensitivity.

## Immunogen

A portion of amino acids 114-142 from the human protein was used as the immunogen for this CDC25C antibody.

## Storage

Aliquot the CDC25C antibody and store frozen at -20oC or colder. Avoid repeated freeze-thaw cycles.