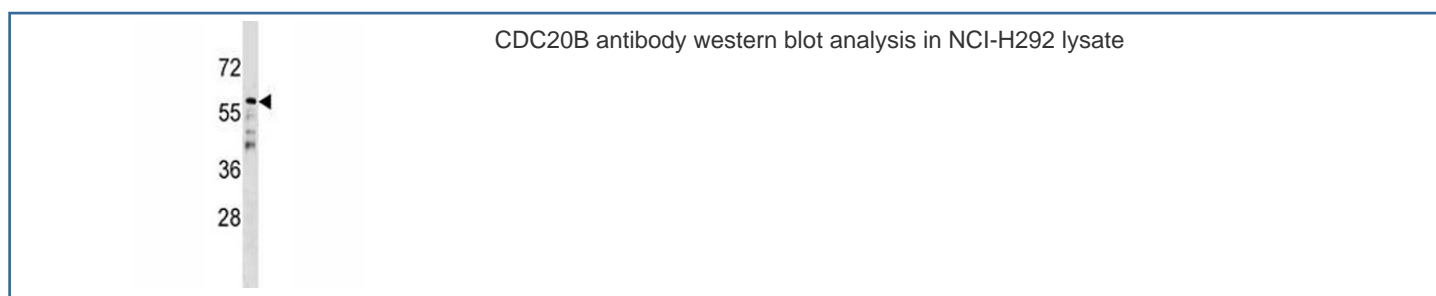


## CDC20B Antibody (F45698)

Catalog No.	Formulation	Size
F45698-0.4ML	In 1X PBS, pH 7.4, with 0.09% sodium azide	0.4 ml
F45698-0.08ML	In 1X PBS, pH 7.4, with 0.09% sodium azide	0.08 ml

[Bulk quote request](#)

<b>Availability</b>	1-3 business days
<b>Species Reactivity</b>	Human
<b>Format</b>	Antigen affinity purified
<b>Host</b>	Rabbit
<b>Clonality</b>	Polyclonal (rabbit origin)
<b>Isotype</b>	Rabbit Ig
<b>Purity</b>	Antigen affinity
<b>UniProt</b>	Q86Y33
<b>Applications</b>	Western Blot : 1:1000
<b>Limitations</b>	This CDC20B antibody is available for research use only.



## Description

The timely destruction of key regulators through ubiquitin-mediated proteolysis ensures the orderly progression of the cell cycle. The APC (anaphase-promoting complex) is a major component of this degradation machinery and its activation is required for the execution of critical events. CDC20B has been implicated as a meiosis specific activator of APC and is required for sporulation in budding yeast.

## Application Notes

Titration of the CDC20B antibody may be required due to differences in protocols and secondary/substrate sensitivity.

## **Immunogen**

A portion of amino acids 11-39 from the human protein was used as the immunogen for this CDC20B antibody.

## **Storage**

Aliquot the CDC20B antibody and store frozen at -20oC or colder. Avoid repeated freeze-thaw cycles.