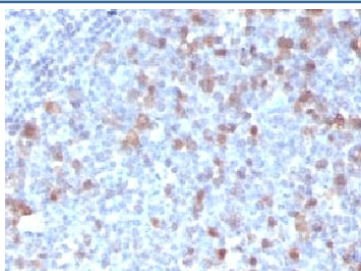


Cdc20 Antibody [clone CLDC20-1] (V7182)

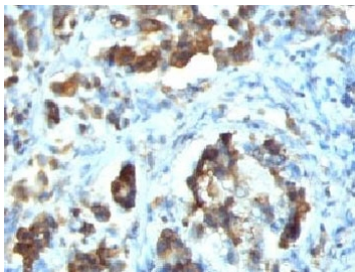
Catalog No.	Formulation	Size
V7182-100UG	0.2 mg/ml in 1X PBS with 0.1 mg/ml BSA (US sourced) and 0.05% sodium azide	100 ug
V7182-20UG	0.2 mg/ml in 1X PBS with 0.1 mg/ml BSA (US sourced) and 0.05% sodium azide	20 ug
V7182SAF-100UG	1 mg/ml in 1X PBS; BSA free, sodium azide free	100 ug
V7182IHC-7ML	Prediluted in 1X PBS with 0.1 mg/ml BSA (US sourced) and 0.05% sodium azide; *For IHC use only*	7 ml

[Bulk quote request](#)

Availability	1-3 business days
Species Reactivity	Human
Format	Purified
Clonality	Monoclonal (mouse origin)
Isotype	Mouse IgG1, kappa
Clone Name	CLDC20-1
Purity	Protein G affinity chromatography
UniProt	Q12834
Localization	Cytoplasmic
Applications	Immunohistochemistry (FFPE) : 2-4ug/ml for 30 min at RT Prediluted IHC Only Format : incubate for 30 min at RT (1)
Limitations	This Cdc20 antibody is available for research use only.



IHC testing of FFPE human tonsil with Cdc20 antibody (clone CLDC20-1). FFPE testing requires sections to be boiled in pH 9 10mM Tris with 1mM EDTA for 10-20 minutes, followed by cooling at RT for 20 minutes, prior to staining.



IHC testing of FFPE human gastric carcinoma with Cdc20 antibody (clone CLDC20-1). FFPE testing requires sections to be boiled in pH 9 10mM Tris with 1mM EDTA for 10-20 minutes, followed by cooling at RT for 20 minutes, prior to staining.

Description

Application Notes

Titration of the Cdc20 antibody may be required for optimal performance.

1. The prediluted format is supplied in a dropper bottle and is optimized for use in IHC. After epitope retrieval step (if required), drip mAb solution onto the tissue section and incubate at RT for 30 min.

Immunogen

Recombinant human protein was used as the immunogen for the Cdc20 antibody.

Storage

Store the Cdc20 antibody at 2-8°C (with azide) or aliquot and store at -20°C or colder (without azide).