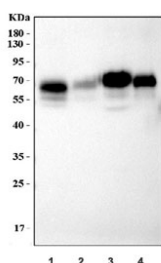


## CD86 Antibody (R31664)

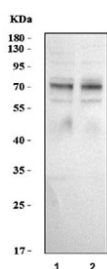
Catalog No.	Formulation	Size
R31664	0.5mg/ml if reconstituted with 0.2ml sterile DI water	100 ug

[Bulk quote request](#)

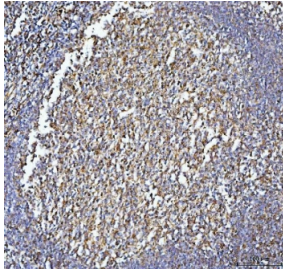
<b>Availability</b>	1-3 business days
<b>Species Reactivity</b>	Human, Mouse
<b>Format</b>	Antigen affinity purified
<b>Host</b>	Rabbit
<b>Clonality</b>	Polyclonal (rabbit origin)
<b>Isotype</b>	Rabbit IgG
<b>Purity</b>	Antigen affinity
<b>Buffer</b>	Lyophilized from 1X PBS with 2% Trehalose
<b>Gene ID</b>	942
<b>Applications</b>	Western Blot : 0.5-1ug/ml Immunohistochemistry (FFPE) : 2-5ug/ml
<b>Limitations</b>	This CD86 antibody is available for research use only.



Western blot testing of mouse 1) spleen, 2) thymus, 3) J774A.1 and 4) ANA-1 cell lysate with CD86 antibody. Predicted molecular weight ~38 kDa (unmodified), 45-70 kDa (glycosylated).



Western blot testing of human 1) Raji and 2) Daudi cell lysate with CD86 antibody. Predicted molecular weight ~38 kDa (unmodified), 45-70 kDa (glycosylated).



IHC staining of FFPE human tonsil tissue with CD86 antibody. HIER: boil tissue sections in pH8 EDTA for 20 min and allow to cool before testing.

## Description

Cluster of Differentiation 86 (also known as B7-2) is a protein expressed on antigen-presenting cells that provides costimulatory signals necessary for T cell activation and survival. The CD86 gene encodes a type I membrane protein that is a member of the immunoglobulin superfamily. The antigen presentation coactivators B7-1 and B7-2/CD86, which are important in other immune-mediated thyroid diseases, are important for lymphocytic infiltration and the immune response against thyroid carcinoma.

## Application Notes

Titration of the CD86 antibody may be required due to differences in protocols and secondary/substrate sensitivity.

## Immunogen

Human partial recombinant protein (AA 24-329) was used as the immunogen for this CD86 antibody.

## Storage

The lyophilized CD86 antibody can be stored at 4°C to -20°C. After reconstitution, aliquot and store at -20°C. Avoid repeated freeze/thaws.