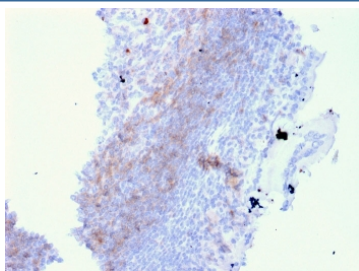


## CD72 Antibody [clone BU40] (V8262)

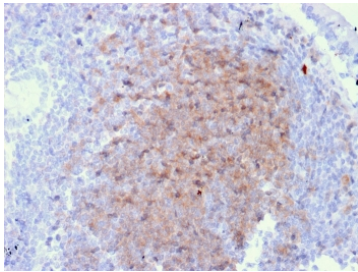
Catalog No.	Formulation	Size
V8262-100UG	0.2 mg/ml in 1X PBS with 0.1 mg/ml BSA (US sourced) and 0.05% sodium azide	100 ug
V8262-20UG	0.2 mg/ml in 1X PBS with 0.1 mg/ml BSA (US sourced) and 0.05% sodium azide	20 ug
V8262SAF-100UG	1 mg/ml in 1X PBS; BSA free, sodium azide free	100 ug

[Bulk quote request](#)

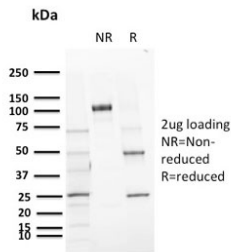
<b>Availability</b>	1-3 business days
<b>Species Reactivity</b>	Human
<b>Format</b>	Purified
<b>Clonality</b>	Monoclonal (mouse origin)
<b>Isotype</b>	Mouse IgG2a, kappa
<b>Clone Name</b>	BU40
<b>Purity</b>	Protein G affinity chromatography
<b>UniProt</b>	P21854
<b>Applications</b>	Flow Cytometry : 1-2ug/10 <sup>6</sup> cells in 0.1ml Immunohistochemistry (FFPE) : 1-2ug/ml
<b>Limitations</b>	This CD72 antibody is available for research use only.



IHC staining of FFPE human lymph node with CD72 antibody (clone BU40). HIER: boil tissue sections in pH 9 10mM Tris with 1mM EDTA for 20 min and allow to cool before testing.



IHC staining of FFPE human lymph node with CD72 antibody (clone BU40). HIER: boil tissue sections in pH 9 10mM Tris with 1mM EDTA for 20 min and allow to cool before testing.



SDS-PAGE analysis of purified, BSA-free CD72 antibody (clone BU40) as confirmation of integrity and purity.

## Description

CD5 has been identified as a transmembrane glycoprotein that is expressed on 70% of normal peripheral blood lymphocytes and on virtually all T lymphocytes in thymus and peripheral blood. Activation of T cells through the T cell receptor (TCR) results in tyrosine phosphorylation of CD5, and the absence of CD5 renders T cells hyper-responsive to TCR-mediated activation. CD5 associates with the TCR/CD3 chain, and with the Src family kinase, Lck p56. The C-type lectin superfamily member CD72 is a cell surface negative regulator of B cell activation from the pro-B through the mature B cell stage. CD72 serves as a receptor for CD5. The ability of lymphocytes to respond to antigenic or mitogenic stimulation utilizes both positive and negative regulatory proteins that influence the threshold for responsiveness. The human CD72 gene maps to chromosome 9p13.3 and encodes a transmembrane glycoprotein that contains an ITIM. Upon tyrosine phosphorylation, the CD72 ITIM recruits SH2-containing phosphatases such as SHP-1, resulting in downregulation of cell activation. CD72<sup>-/-</sup> mice contain hyperproliferative B cells.

## Application Notes

Optimal dilution of the CD72 antibody should be determined by the researcher.

## Immunogen

The HF B1 plasmacytoid cell line was used as the immunogen for this CD72 antibody.

## Storage

Store the CD72 antibody at 2-8°C (with azide) or aliquot and store at -20°C or colder (without azide).