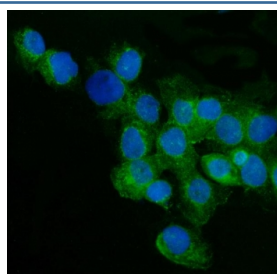


## CD59 Antibody (R31963)

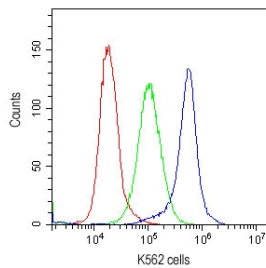
Catalog No.	Formulation	Size
R31963	0.5mg/ml if reconstituted with 0.2ml sterile DI water	100 ug

**Bulk quote request**

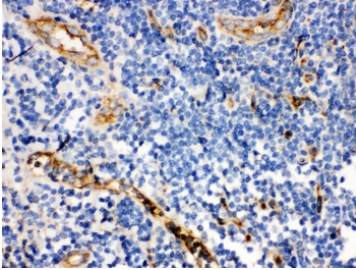
<b>Availability</b>	1-3 business days
<b>Species Reactivity</b>	Human
<b>Format</b>	Antigen affinity purified
<b>Host</b>	Rabbit
<b>Clonality</b>	Polyclonal (rabbit origin)
<b>Isotype</b>	Rabbit IgG
<b>Purity</b>	Antigen affinity
<b>Buffer</b>	Lyophilized from 1X PBS with 2.5% BSA, 0.025% sodium azide
<b>UniProt</b>	P13987
<b>Localization</b>	Plasma membrane, cytoplasm
<b>Applications</b>	Immunohistochemistry (FFPE) : 0.5-1ug/ml Immunofluorescence : 5ug/ml Flow Cytometry : 1-3ug/10 <sup>6</sup> cells Western Blot : 1-2ug/ml
<b>Limitations</b>	This CD59 antibody is available for research use only.



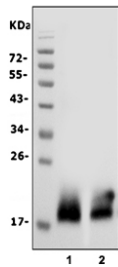
Immunofluorescent staining of FFPE human A431 cells with CD59 antibody (green) and DAPI nuclear stain (blue). HIER: steam section in pH6 citrate buffer for 20 min.



Flow cytometry testing of human K562 cells with CD59 antibody at 1ug/10<sup>6</sup> cells; Red=cells alone, Green=isotype control, Blue=CD59 antibody.



IHC testing of FFPE human tonsil with CD59 antibody. HIER: Boil the paraffin sections in pH 6, 10mM citrate buffer for 20 minutes and allow to cool prior to staining.



Western blot testing of human 1) HeLa and 2) PC-3 cell lysate with CD59 antibody. Expected molecular weight: 14-20 kDa depending on level of glycosylation.

## Description

This gene encodes a cell surface glycoprotein that regulates complement-mediated cell lysis, and it is involved in lymphocyte signal transduction. And this protein is a potent inhibitor of the complement membrane attack complex, whereby it binds complement C8 and/or C9 during the assembly of this complex, thereby inhibiting the incorporation of multiple copies of C9 into the complex, which is necessary for osmolytic pore formation. It also plays a role in signal transduction pathways in the activation of T cells. Mutations in this gene cause CD59 deficiency, a disease resulting in hemolytic anemia and thrombosis, and which causes cerebral infarction. Multiple alternatively spliced transcript variants, which encode the same protein, have been identified for this gene.

## Application Notes

Optimal dilution of the CD59 antibody should be determined by the researcher.

## Immunogen

Amino acids 26-102 of human CD59 were used as the immunogen for the CD59 antibody.

## Storage

After reconstitution, the CD59 antibody can be stored for up to one month at 4°C. For long-term, aliquot and store at -20°C. Avoid repeated freezing and thawing.

